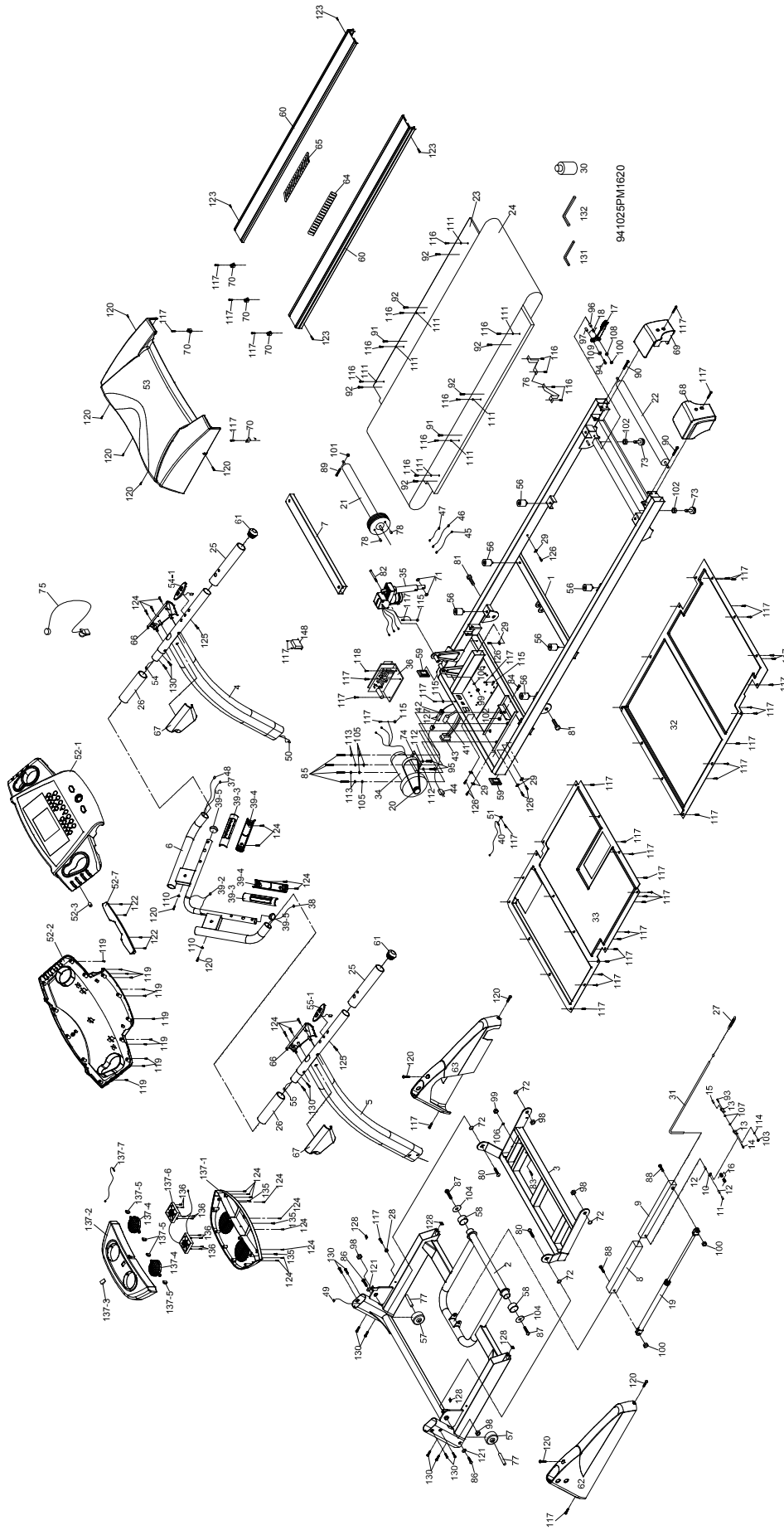


F63-(Z10a-A76)



## U-F63 (563886) parts list

NO.	DESCRIPTION	Q'TY
1	MAIN FRAME	1
2	FRAME BASE	1
3	INCLINE BRACKET	1
4	RIGHT HANDRAIL	1
5	LEFT HANDRAIL	1
6	CONSOLE SUPPORT	1
7	DECK CROSS BRACE	1
8	OUTER SLIDE	1
9	INNER SLIDE	1
10	2T LINK	1
11	$\phi$ 8 x30L LINK SHAFT	1
12	$\phi$ 8 x $\phi$ 12.7 x 11.5 L SHAFT BUSHING	2
13	2T FASTENING BRACKET	2
14	$\phi$ 5 x $\phi$ 8 x 25L CLEVIS PIN	1
15	$\phi$ 5 x $\phi$ 8 x 9L FASTENING BUSHING	1
16	DUAL ROTA-SPRING	1
17	CLENCHING HANDLE ASSY. <b>(Handle ONLY 000506)</b>	1
18	CHENCHING ROTA-SPRING	1
19	CYLINDER - 850N	1
20	DRIVE BELT - 240J/610J	1
21	FRONT ROLLER W/ PULLEY	1
22	REAR ROLLER	1
23	RUNNING DECK	1
24	RUNNING BELT	1
25	FOAM GRIP (A)	2
26	FOAM GRIP (B)	2
27	STEEL ROPE ROTA-SPRING	1
28	WIRE CLAMP	1
29	WIRE TIE MOUNT	6
30	LUBRICANT	1
31	STEEL ROPE (805mm)	1
32	TOP FRAME COVER	1
33	BOTTOM FRAME COVER	1
34	MOTOR - 2.5hp TUR-YIH (400mm wire)	1
35	INCLINE MOTOR	1
36	CONTROLLER	1
37	800 m/m SPEED CABLE (UPPER)	1
38	800 m/m INCLINE CABLE (UPPER)	1
39	HANDPULSE ASSY.	2

39~2	650 m/m HANDPULSE CABLE		4
39~3	HANDPULSE ASSEMBLY TOP		1
39~4	HANDPULSE ASSEMBLY BOTTOM		2
39~5	HANDLE BAR END CAP		2
40	SENSOR W/CABLE		2
41	BREAKER		1
42	POWER SOCKET		1
43	ON / OFF SWITCH		1
44	POWER CORD		1
45	100mm x 764 x 764 CONNECTING CABLE(BLACK)		1
46	300mm x 764 x 764 CONNECTING CABLE (WHITE)		1
47	300mm x 764 x 764 CONNECTING CABLE(BLACK)		1
48	800 m/m COMPUTER CABLE (UPPER)		1
49	1150 m/m COMPUTER CABLE (LOWER)		1
50	1300 m/m COMPUTER CABLE (MIDDLE)		1
51	SENSOR RACK		1
52	CONSOLE	w/Handles	1
52~1	TOP CONSOLE COVER		1
52~2	BOTTOM CONSOLE COVER		1
52~3	SPEAKER AMP PLUG		1
52~7	BOOK RACK		1
53	TOP MOTOR COVER		1
54	SPEED ADJUSTMENT SWITCH CABLE		1
55	INCLINE ADJUSTMENT SWITCH CABLE		1
56	M8 x $\phi$ 30 x 35 CUSHION - Soft		6
57	$\phi$ 60 WHEEL(A)		2
58	$\phi$ 62 WHEEL(B)		2
59	30 x 60 SQUARE END CAP		2
60	OUTSIDE FOOT RAIL		2
61	$\phi$ 38 BUTTON HEAD END CAP		2
62	FRAME BASE CAP (L)		1
63	FRAME BASE CAP (R)		1
66	<b>HANDGRIP SIDE CAP (R) Comes as SET</b>		2
67	<b>HANDGRIP SIDE CAP (L) Comes as SET</b>		2
68	REAR ADJUSTMENT BASE (L)		1
69	REAR ADJUSTMENT BASE (R)		1
70	MOTOR COVER ANCHOR(D)		5
71	$\phi$ 10 x $\phi$ 24 x 3T NYLON WASHER(A)		2
72	$\phi$ 50 x $\phi$ 13 x 3T NYLON WASHER(B)		4
73	$\phi$ 30 FOOT PAD		2
74	MOTOR BRACKET		1

75	SAFETY KEY		1
76	BELT GUIDE		2
77	$\phi$ 14 x $\phi$ 10 x 35 WHEEL SLEEVE		2
78	~15 MAGNET (SLUG IS SENT WITH MAGNET)		2
79	0.8T COMPUTER CABLE DRAWSRING		2
80	1/2" x 1-1/4" CARRIAGE BOLT		2
81	1/2" x 1" HEX HEAD SCREW		2
82	3/8" x 4-1/2" SOCKET HEAD CAP SCREW		1
83	3/8" x 3-3/4" HEX HEAD SCREW		1
84	3/8" x 1-1/2" HEX HEAD SCREW		1
85	3/8" x 3/4" HEX HEAD SCREW		4
86	3/8" x 2" FLAT HEAD SOCKET SCREW		2
87	5/16" x 1" BUTTON HEAD SOCKET SCREW		2
88	5/16" x 2-3/4" BUTTON HEAD SOCKET SCREW		2
89	M8 x 60m/m HEX HEAD SCREW		1
90	M8 x 80m/m SOCKET HEAD CAP SCREW		2
91	M8 x 50m/m FLAT HEAD COUNTERSINK SCREW		2
92	M8 x 25m/m FLAT HEAD COUNTERSINK SCREW		6
93	M3 x 10m/m ROUND HEAD SOCKET SCREW		1
94	M5 x 15m/m BUTTON HEAD SOCKET SCREW		1
95	M8 x 12m/m HEX HEAD SCREW		2
96	5/16" x 42 m/m BUTTON HEAD SOCKET SCREW		1
97	M5 NYLON NUT		1
98	1/2" NYLON NUT		4
99	3/8" NYLON NUT		2
100	5/16" NYLON NUT		3
101	M8 NYLON NUT		1
102	3/8" NUT		3
103	M3 NUT		1
104	$\phi$ 5/16" x $\phi$ 35 x 1.5T FLAT WASHER		2
105	$\phi$ 25 x $\phi$ 10 x 1.5T FLAT WASHER		4
106	$\phi$ 19 x $\phi$ 10 x 1.5T FLAT WASHER		2
107	$\phi$ 5 x $\phi$ 10 x 1.0T FLAT WASHER		2
108	$\phi$ 5/16" x $\phi$ 18 x 1.5T FLAT WASHER		1
109	$\phi$ 5 x $\phi$ 12 x 1.0T FLAT WASHER		1
110	$\phi$ 5 x $\phi$ 15 x 1.0T FLAT WASHER		2
111	1/4" x $\phi$ 25 x 1T CONCAVE WASHER		10
112	M8 SPRING WASHER		2
113	$\phi$ 10 SPRING WASHER		4
114	M3 SPRING WASHER		1
115	M5 RAISED WASHER		4

<b>116</b>	4x12m/m SELF TAPPING SCREW		<b>14</b>
<b>117</b>	5x16m/m TAPPING SCREW - Black		29
<b>118</b>	5x19m/m TAPPING SCREW		1
<b>119</b>	3.5x12m/m SELF TAPPING SCREW		12
<b>120</b>	5x16m/m TAPPING SCREW - Black		11
<b>122</b>	3.5 x 12 m/m SELF TAPPING SCREW		4
<b>123</b>	4 x 19 m/m SELF TAPPING SCREW		4
<b>124</b>	3x10 m/m TAPPING SCREW		19
<b>125</b>	4x38m/m SELF TAPPING SCREW		2
<b>126</b>	3.5 x 16 m/m TAPPING SCREW		6
<b>127</b>	3 x 10 m/m SELF TAPPING SCREW		2
<b>128</b>	M5 IRON PLATE NUT		4
<b>130</b>	5/16" x 1/2" BUTTON HEAD SOCKET SCREW		12
<b>131</b>	COMBINATION M5 ALLEN WRENCH & SCREWDRIVER		1
<b>132</b>	M6 ALLEN WRENCH		1
<b>135</b>	M3 x 18m/m BUTTON HEAD SOCKET SCREW		3
<b>136</b>	3.5 x 43m/m SELF TAPPING SCREW		8
<b>137</b>	FAN ASSEMBLY		1
<b>137~1</b>	BOTTOM FAN COVER		1
<b>137~2</b>	TOP FAN COVER		1
<b>137~3</b>	FAN POWER SWITCH		1
<b>137~4</b>	DEFLECTOR FAN GRILL		2
<b>137~5</b>	FAN GRILL ANCHOR		4
<b>137~6</b>	DEFLECTOR FAN GRILL W/ POWER PLUG		2
	HARDWARE KIT	022680	1
	DECAL (SIDE)	000986	2
	OVERLAY	000943	1