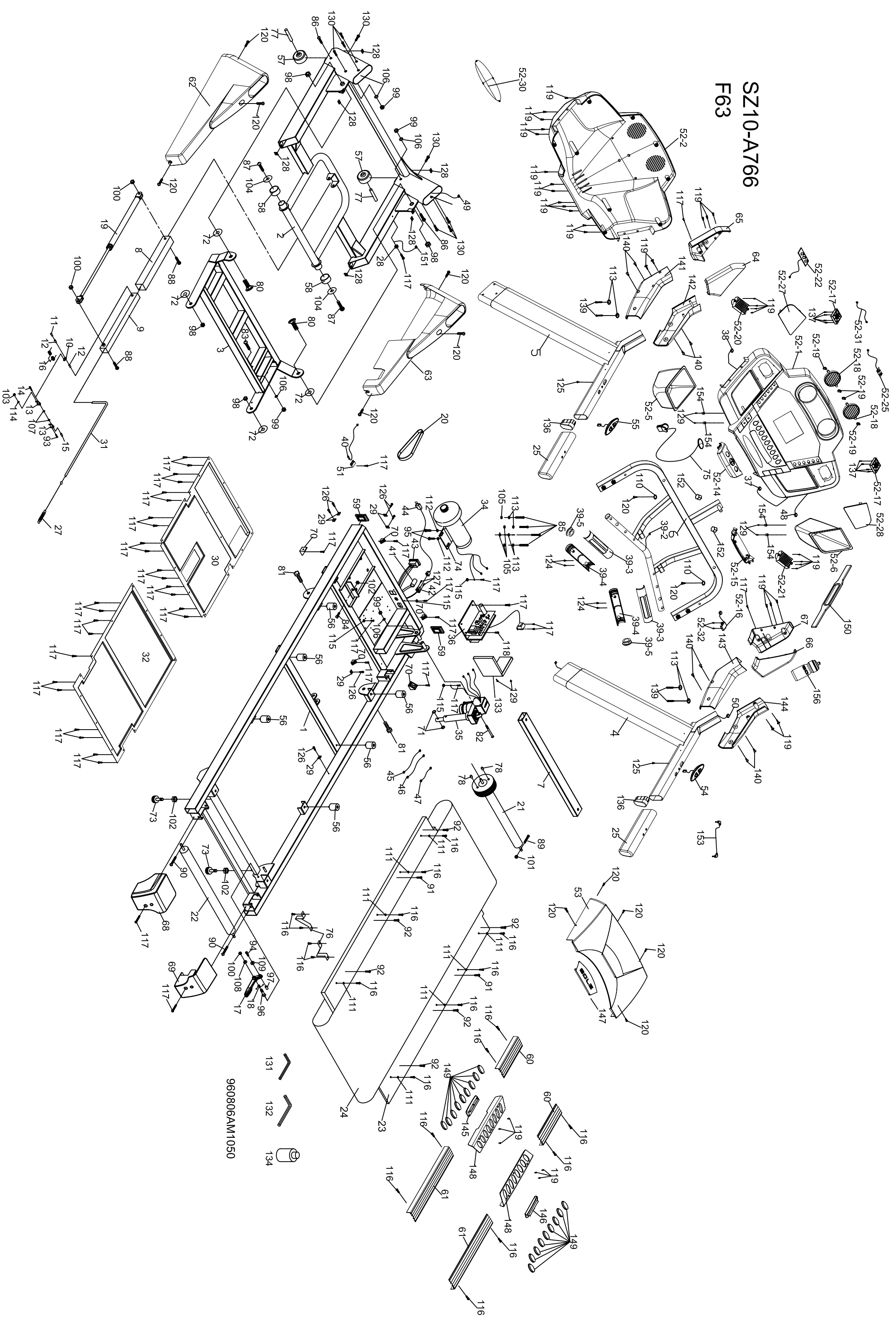


# SZ10-A766 F63



960806AM1050



## VF63 (563887) Part List

Parts #	Description	Qty
1	Main Frame	1
2	Frame Base 40*118 (the same as F63, but different from that of UF63)	1
3	Incline Bracket	1
4	Right Handrail NEW	1
5	Left Handrail NEW	1
6	Console Support NEW	1
7	Deck Cross Brace	1
8	Outer Slide	1
9	Inner Slide	1
10	Link	1
11	Link Shaft	1
12	Shaft Bushing	2
13	Fastening Bracket	2
14	Clevis Pin	1
15	Fastening Bushing	1
16	Dual Rota-Spring	1
17	Clenching Handle ONLY Locking Cable Assy. 000720	1
18	Clenching Rota-Spring	1
19	Cylinder - 800N NEW	1
20	Drive Belt 240J/610J	1
21	Front Roller W/Pulley	1
22	Rear Roller	1
23	Running Deck NEW 710 x 1330 x 18mm	1
24	Running Belt NEW SCREEN PRINTING-SAME SIZE	1
25	Handle Bar Foam	2
27	2.0 Steel Rope Drawspring	1
28	1/4" Wire Clamp	1
29	Wire Tie Mount	6
30	Bottom Frame Cover	1
31	Steel Rope - Locking Cable Only (805mm)	1
32	Top Frame Cover	1
34	Motor 2.5hp Tur-Yih (400mm wire)	1
35	Incline Motor NEW	1
36	Controller	1
37	800mm Speed Cable (Upper)	1
38	800mm Incline Cable (Upper)	1
39	Handpulse Assembly	2
39~2	Handpulse Wire	1
39~3	Handpulse Assembly Top	2
39~4	Handpulse Assembly Bottom	2
39~5	Handpulse End Cap	2
40	1000 m/m Sensor W/Cable NEW	1
41	Breaker	1

42	Power Socket		1
43	On/Off Switch		1
44	Power Cord		1
45	100mm Connecting Wires (Black)		1
46	300mm Connecting Wires (White)		1
47	300mm Connecting Wires (Black)		1
48	Computer Cable (Upper) 800mm		1
49	Computer Cable (Lower) 1150mm		1
50	Computer Cable (Middle) 1100 mm NEW		1
51	Sensor Rack		1
52	Console Assembly NEW		1
52~1	Top Console Cover NEW		1
52~2	Bottom Console Cover NEW		1
52~5	Beverage Holder (L) NEW		1
52~6	Beverage Holder (R) NEW		1
52~14	Front Console Cover (Top) NEW		1
52~15	Front Console Cover (Bottom) NEW		1
52~16	300mm Safety Switch W/Moudule NEW		1
52~17	Fan NEW		2
52~18	Deflector Fan Grill NEW		2
52~19	Fan Grill Anchor NEW		4
52~20	700mm Speaker NEW		1
52~21	250mm Speaker NEW		1
52~22	Amplifier NEW		1
52~25	Receiver, HR NEW		1
52~27	Speaker Iron Net (L) NEW		1
52~28	Speaker Iron Net (R) NEW		1
52~30	Bottom Console Badge NEW		1
52~31	Power Cord Of Amplifier NEW		1
52~32	3×10mm Self Tapping Screw NEW		2
53	Top Motor Cover NEW		1
54	Speed Adjustment Switch W/Cable NEW		1
55	Incline Adjustment Switch W/Cable NEW		1
56	Cushion		6
57	Wheel (A)		2
58	Wheel (B)		2
59	30 x 60 Square End Cap		2
60	300mm Foot Rail NEW		2
61	615mm Foot Rail NEW		2
62	Frame Base Cap (L) NEW		1
63	Frame Base Cap (R) NEW		1
64	Left Connecting Cap (Top) NEW		1
65	Left Connecting Cap (Bottom) NEW		1
66	Right Connecting Cap (Top) NEW		1
67	Right Connecting Cap (Bottom) NEW		1
68	Rear Adjustment Base (L )		1

69	Rear Adjustment Base (R )		1
70	Motor Cover Anchor		5
71	ψ10 x ψ24 x 3T_Nylon Washer (A)		2
72	ψ50 x ψ13 x 3T_Nylon Washer (B)		4
73	Foot Pad		2
74	Motor Bracket		1
75	Ellipse Safety Key <span style="color: red;">NEW</span>		1
76	Belt Guide		2
77	Wheel Sleeve		2
78	~10 Magnet (slug is sent with magnet)		2
80	1/2" x 1-1/4" Carriage Bolt		2
81	1/2" x 1" Hex Head Screw		2
82	3/8" x 4-1/2" Socket Head Cap Screw		1
83	3/8" x 3-3/4" Hex Head Screw		1
84	3/8" x 1-1/2" Hex Head Screw		1
85	3/8" x 3/4" Hex Head Screw		4
86	3/8" x 2" Thumb Head Socket Screw		2
87	5/16" x 1" Button Head Socket Screw		2
88	5/16" x 2-3/4" Button Head Socket Screw		2
89	M8 x 60m/m Hex Head Screw		1
90	M8 x 80m/m Socket Head Cap Screw		2
91	M8x50mm Flat Head Countersink Screw (Deck)		2
92	M8 x 25m/m Flat Head Countersink Screw (Deck)		6
93	M3 x 10m/m Phillips Head Screw		1
94	M5 x 20m/m Phillips Head Screw		1
95	M8 x 12m/m Hex Head Screw		2
96	5/16" x 42 m/m Button Head Socket Screw		1
97	M5 Nyloc Nut		1
98	1/2" Nyloc Nut		4
99	3/8" x7T_Nyloc Nut		4
100	5/16" x 6T_Nyloc Nut		3
101	M8 x 8T_Nyloc Nut		1
102	3/8" Nut		3
103	M3 Nut		1
104	ψ35 x ψ5/16" x 1.5T Flat Washer		2
105	ψ25 x ψ10 x 1.5T Flat Washer		4
106	ψ19 x ψ10 x 1.5T Flat Washer		4
107	ψ5 x ψ10 x 1.0T Flat Washer		2
108	ψ5/16" x ψ18 x 1.5T Flat Washer		1
109	ψ5 x ψ12 x 1.0T Flat Washer		1
110	ψ5 x ψ15 x 1.0T Flat Washer		2
111	ψ6.5 x ψ25 x 1.5T Concave Washer		8
112	M8 Split Washer		2
113	ψ10 Split Washer		8
114	M3 Split Washer		1
115	M5 Raised Washer		4

116	4x12m/m_Self Tapping Screw		20
117	5x16m/m_Tapping Screw - Black		45
118	5x19m/m_Tapping Screw		1
119	3.5x12mm_Self Tapping Screw		37
120	5 x 16m/m_Tapping Screw - Black		13
124	3x12 m/m_Tapping Screw		4
125	4x50m/m_Self Tapping Screw <b>NEW</b>		2
126	3.5 x 16 m/m_Tapping Screw		6
127	3 x 10 m/m_Self Tapping Screw		2
128	M5_Iron Plate Nut (Frame Base Caps)		6
129	3x8mm_Self Tapping Screw		2
130	5/16" x 1/2" Button Head Socket Screw		8
131	Combination M5 Allen Wrench & Phillips Head Screw Driver		1
132	M6_Allen Wrench		1
133	Controller Back Plate <b>NEW</b>		1
134	Lubricant		1
136	Ellipse End Cap <b>NEW</b>		2
137	3.5x32mm_Self Tapping Screw		8
139	3/8"x1-3/4" Button Head Socket Screw <b>NEW</b>		4
140	M5x10mm_Phillips Head Screw <b>NEW</b>		8
141	Left Handgrip Side Cap (LL) <b>NEW</b>		1
142	Left Handgrip Side Cap (LR) <b>NEW</b>		1
143	Right Handgrip Side Cap (RL) <b>NEW</b>		1
144	Right Handgrip Side Cap (RR) <b>NEW</b>		1
145	Cushion Spacer (L) <b>NEW</b>		1
146	Cushion Spacer (R) <b>NEW</b>		1
147	Top Motor Cover Plate <b>NEW</b>		1
148	Pedal Cover (Top) <b>NEW</b>		2
149	Pedal Cover (Bottom) <b>NEW</b>		18
150	Chest Strap (Does not use POLAR receiver)		1
151	Ground Wire		1
152	Bolt Cap <b>NEW</b>		2
156	Drink Bottle		1
	Hardware Kit	003035	1
	Overlay	003098	1
	Poly Sticker (Console)	003099	1