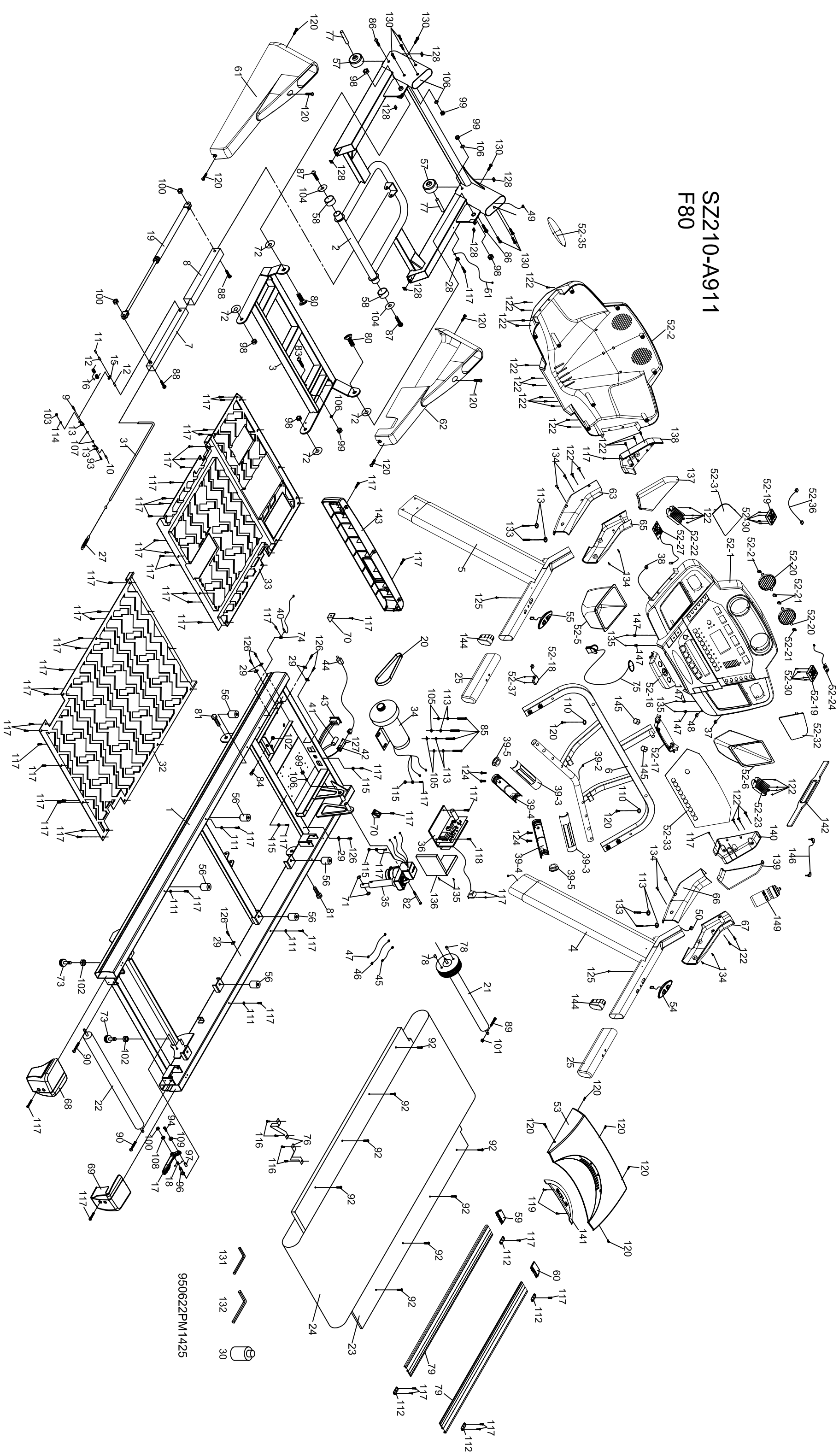


SZ210-A911 F80



- 131
- 132
- 30

950622PM1425

VF80 (580887) Part List

Parts #	Description	Qty
1	Main Frame	1
2	Frame Base	1
3	Incline Bracket	1
4	Right Handrail	1
5	Left Handrail	1
6	Console Support	1
7	Inner Slide	1
8	Outer Slide	1
9	Clevis Pin	1
10	Fastening Bushing	1
11	Link Shaft	1
12	Shaft Bushing	2
13	Fastening Bracket	2
15	Link	1
16	Dual Rota-Spring	1
17	Clenching Handle ONLY	1
18	ChenChin Rota-Spring	1
19	900N Cylinder	1
20	240J/610J Drive Belt	1
21	Front Roller W/Pulley	1
22	Rear Roller	1
23	Running Deck (1300 x 614 x 25mm)	1
24	Running Belt (210 x 2960 x 2.5mm)	1
25	Handgrip Foam	2
27	Steel Rope Drawspring	1
28	Wire Clamp	1
29	Wire Tie Mount	6
30	Lubricant	1
31	Steel Rope-Locking Cable Only (805mm)	1
32	Top Frame Cover	1
33	Bottom Frame Cover	1
34	Motor -3.0hp YC	1
35	Incline Motor	1
36	Controller	1
36	Transformer	1
37	800mm Speed Cable (Upper)	1
38	800mm Incline Cable (Upper)	1
39	Handpulse Assembly	2
39~2	Handpulse Wire, Coiled	1
39~3	Handpulse Assembly Top	2
39~4	Handpulse Assembly Bottom	2
39~5	Handpulse End Cap	2
40	Sensor W/Cable	1
41	Breaker	1

42	Power Socket		1
43	On/Off Switch		1
44	Power Cord		1
45	100mm_Connecting Wires (Black)		1
46	300mm_Connecting Wires (White)		1
47	300mm_Connecting Wires (Black)		1
48	800mm_Computer Cable (Upper)		1
49	1150mm_Computer Cable (Lower)		1
50	1100mm_Computer Cable (Middle)		1
51	1000mm Ground Wire		1
52	Console Assembly		1
52~1	Top Console Cover		1
52~2	Bottom Console Cover		1
52~5	Beverage Holder (L)		1
52~6	Beverage Holder (R)		1
52~16	Front Console Cover (Top)		1
52~17	Front Console Cover (Bottom)		1
52~18	Safety Switch W/Moudule		1
52~19	Fan		2
52~20	Deflector Fan Grill		2
52~21	Fan Grill Anchor		4
52~22	700mm_Speaker		1
52~23	250mm_Speaker		1
52~24	Amplifier		1
52~27	Receiver, HR Assembly		1
52~30	3.5 x32m/m_Self Tapping Screw		8
52~31	Speaker Iron Net (L)		1
52~32	Speaker Iron Net (R)		1
52~33	Face Plate Lens Cover		1
52~35	Bottom Console Badge		1
52~36	Power Cord Of Amplifier		1
52~37	3×10mm_Self Tapping Screw		2
53	Top Motor Cover		1
54	300mm_Speed Adjustment Switch W/Cable		1
55	300mm_Incline Adjustment Switch W/Cable		1
56	M8 x 30 x 35 Deck Cushion		6
57	75 x 35 Wheel (A)		2
58	62 x 32 x 30 Wheel (B)		2
59	Foot Rail Cap (L)		1
60	Foot Rail Cap (R)		1
61	Frame Base Cap (L)		1
62	Frame Base Cap (R)		1
63	Left Handgrip Side Cap (LL)		1
65	Left Handgrip Side Cap (LR)		1
66	Right Handgrip Side Cap (RL)		1
67	Right Handgrip Side Cap (RR)		1

68	Rear Adjustment Base (R)		1
69	Rear Adjustment Base (L)		1
70	Motor Cover Anchor		2
71	10 x 24 x 3T Nylon Washer (A)		2
72	13 x 50 x Nylon Washer (B)		4
73	30 x 3/8 Foot Pad		2
74	Sensor Rack		1
75	Ellipse Safety Key		1
76	Belt Guide		2
77	Wheel Sleeve		2
78	10 Magnet (slug is sent with magnet)		2
79	Foot Rail		2
80	1/2" x 1-1/4" Carriage Bolt		2
81	1/2" x 1" Hex Head Screw		2
82	3/8" x 4-1/2" Socket Head Cap Screw		1
83	3/8" x 3-3/4" Button Head Socket Screw		1
84	3/8" x 1-1/2" Hex Head Screw		1
85	3/8" x 1" Hex Head Screw		4
86	3/8" x 2" Thumb Head Socket Screw		2
87	5/16" x 1" Button Head Socket Screw		2
88	5/16" x 2-3/4" Button Head Socket Screw		2
89	M8 x 60m/m Hex Head Screw		1
90	M8 x 80m/m Socket Head Cap Screw		2
92	M8 x 35m/m Flat Head Countersink Screw		8
93	M3 x 10m/m Phillips Head Screw		1
94	M5 x 20m/m Phillips Head Screw		1
96	5/16" x 42 m/m Phillips Head Screw		1
97	M5 Nyloc Nut		1
98	1/2" x 8T Nyloc Nut		4
99	3/8" x 7T Nyloc Nut		4
100	5/16" x 6T Nyloc Nut		3
101	M8x 8T Nyloc Nut		1
102	3/8" x 6.5T Nut		3
103	M3 Nut		1
104	φ 35 x φ 5/16" x 1.5T Flat Washer		2
105	φ 25 x φ 10 x 1.5T Flat Washer		4
106	φ 19 x φ 10 x 1.5T Flat Washer		4
107	φ 5 x φ 10 x 1.0T Flat Washer		2
108	φ 5/16" x φ 18 x 1.5T Flat Washer		1
109	φ 5 x φ 12 x 1.0T Flat Washer		1
110	φ 5 x φ 15 x 1.0T Flat Washer		2
111	φ 6× φ 23× φ 13×5.5T×3T Nylon Dished Washer		4
112	φ 5.5 x 27x 60 x 1.0Tx2.5H Concave Washer		4
113	φ 10 Split Washer		8
114	M3 Split Washer		1

115	M5_Raised Washer		4
116	4x12m/m_Self Tapping Screw		4
117	5x16m/m_Tapping Screw		61
118	5x19m/m_Tapping Screw		1
119	3.5 x 6 m/m_Self Tapping Screw		2
120	5 x 16m/m_Tapping Screw		13
122	3.5 x 12 m/m_Self Tapping Screw		31
124	3x10 m/m_Tapping Screw		4
125	4x50m/m_Self Tapping Screw		2
126	3.5 x 16 m/m_Tapping Screw		6
127	3 x 10 m/m_Self Tapping Screw		2
128	Iron Plate Nut		6
130	5/16" x 1/2" Button Head Socket Screw		8
131	Combination M5 Allen Wrench & Phillips Head Screw Driver		1
132	M6_Allen Wrench		1
133	3/8"x1-3/4" Button Head Socket Screw		4
134	M5x10mm_Phillips Head Screw		8
135	3x8mm_Self Tapping Screw		2
136	Controller Back Plate		1
137	Left Connecting Cap (Top)		1
138	Left Connecting Cap (Bottom)		1
139	Right Connecting Cap (Top)		1
140	Right Connecting Cap (Bottom)		1
141	Top Motor Cover Plate		1
142	Chest Strap (Does not use POLAR receiver)		1
143	Front Motor Cover		1
144	Ellipse End Cap		2
145	Bolt Cap		2
149	Drink Bottle		1
	Hardware Kit	003003	1
	Decal (Side)	003093	2
	Poly Sticker	003100	1
	Button Overlay	004119	1
	Upper Display	004113	1
	Lower Board	004117	1