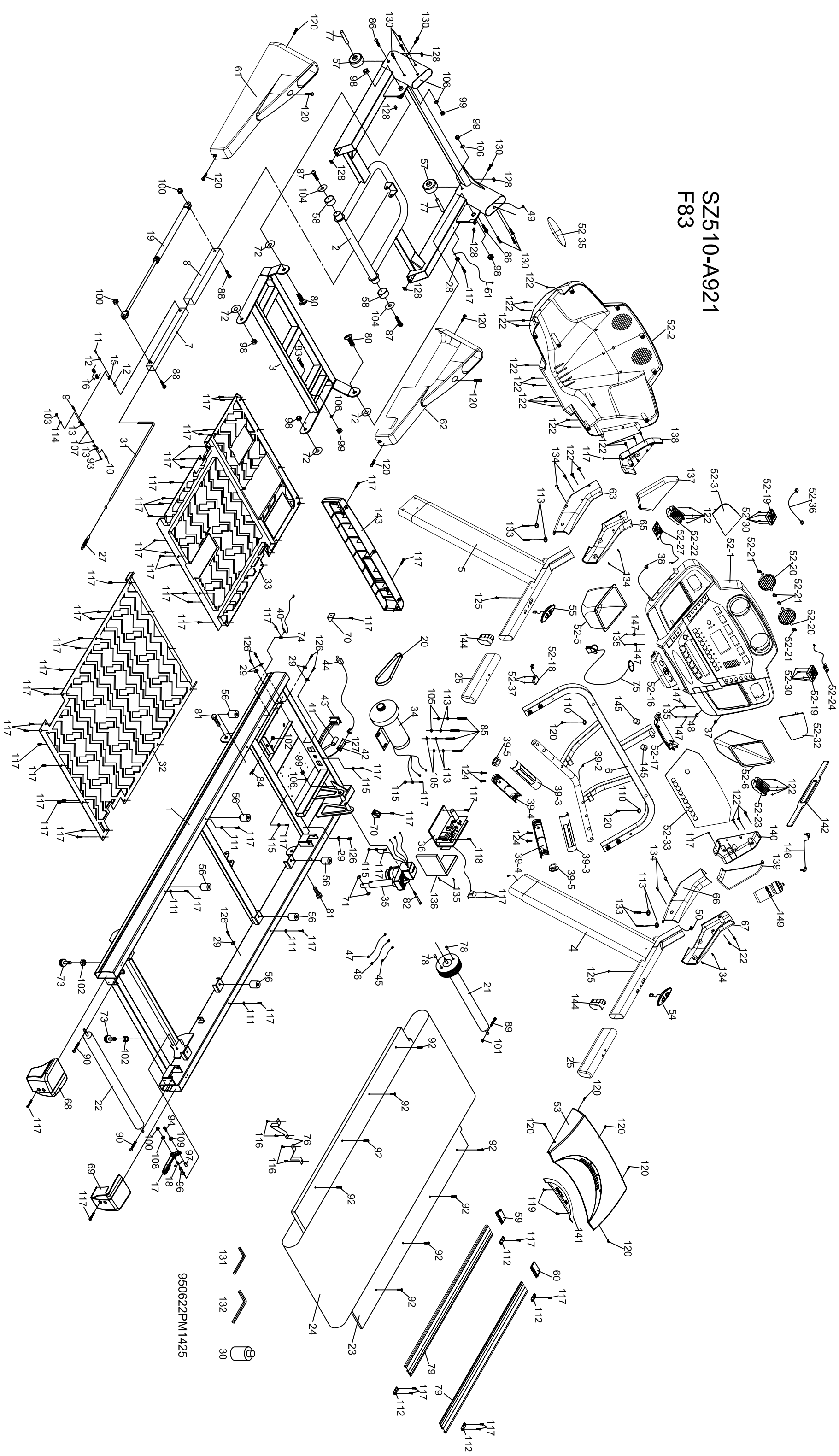


SZ510-A921 F83



950622PM1425



VF83 (583887) Part List

| Parts # | Description | Qty |
|---------|---|-----|
| 1 | Main Frame | 1 |
| 2 | Frame Base | 1 |
| 3 | Incline Bracket | 1 |
| 4 | Right Handrail | 1 |
| 5 | Left Handrail | 1 |
| 6 | Console Support | 1 |
| 7 | Inner Slide Locking Cable Assembly | 1 |
| 8 | Outer Slide | 1 |
| 9 | Clevis Pin | 1 |
| 10 | Fastening Bushing | 1 |
| 11 | Link Shaft | 1 |
| 12 | Shaft Bushing | 2 |
| 13 | Fastening Bracket | 2 |
| 15 | Link | 1 |
| 16 | Dual Rota-Spring | 1 |
| 17 | Clenching Handle | 1 |
| 18 | Clenching Rota-Spring | 1 |
| 19 | Cylinder - 1000N | 1 |
| 20 | Drive Belt - 240J/610J | 1 |
| 21 | Front Roller W/Pulley | 1 |
| 22 | Rear Roller | 1 |
| 23 | Running Deck (1375 x 614 x 25mm) | 1 |
| 24 | Running Belt (510 x 3110 x 2.5mm) | 1 |
| 25 | Handgrip Foam | 2 |
| 27 | 2.0 Steel Rope Drawspring | 1 |
| 28 | 1/4" Wire Clamp | 1 |
| 29 | Wire Tie Mount | 6 |
| 30 | Lubricant | 1 |
| 31 | Steel Rope - Locking Cable Only (880mm) | 1 |
| 32 | Top Frame Cover | 1 |
| 33 | Bottom Frame Cover | 1 |
| 34 | Motor 3.0hp YC | 1 |
| 35 | Incline Motor | 1 |
| 36 | Controller | 1 |
| 37 | 800mm Speed Cable (Upper) | 1 |
| 38 | 800mm Incline Cable (Upper) | 1 |
| 39 | Handpulse Assembly | 2 |
| 39~2 | Handpulse Wire, Coiled | 4 |
| 39~3 | Handpulse Assembly Top | 1 |
| 39~4 | Handpulse Assembly Bottom | 2 |
| 39~5 | Handpulse End Cap | 2 |
| 40 | Sensor W/Cable | 1 |

| | | | |
|-------|---|--|---|
| 41 | Breaker | | 1 |
| 42 | Power Socket | | 1 |
| 43 | On/Off Switch | | 1 |
| 44 | Power Cord | | 1 |
| 45 | 100mm_Connecting Wires (Black) | | 1 |
| 46 | 300mm_Connecting Wires (White) | | 1 |
| 47 | 300mm_Connecting Wires (Black) | | 1 |
| 48 | 800mm_Computer Cable (Upper) | | 1 |
| 49 | 1150mm_Computer Cable (Lower) | | 1 |
| 50 | 1100mm_Computer Cable (Middle) | | 1 |
| 51 | Ground Wire | | 1 |
| 52 | Console Assembly | | 1 |
| 52~1 | Top Console Cover | | 1 |
| 52~2 | Bottom Console Cover | | 1 |
| 52~5 | Beverage Holder (L) | | 1 |
| 52~6 | Beverage Holder (R) | | 1 |
| 52~16 | Front Console Cover (Top) | | 1 |
| 52~17 | Front Console Cover (Bottom) | | 1 |
| 52~18 | Safety Switch W/Moudule | | 1 |
| 52~19 | Fan | | 2 |
| 52~20 | Deflector Fan Grill | | 2 |
| 52~21 | Fan Grill Anchor | | 4 |
| 52~22 | 700mm_Speaker | | 1 |
| 52~23 | 250mm_Speaker | | 1 |
| 52~24 | Amplifier | | 1 |
| 52~27 | Receiver, HR Assembly | | 1 |
| 52~30 | 3.5 x32m/m_Self Tapping Screw | | 8 |
| 52~31 | Speaker Iron Net (L) | | 1 |
| 52~32 | Speaker Iron Net (R) | | 1 |
| 52~33 | Face Plate Lens Cover | | 1 |
| 52~35 | Bottom Console Badge | | 1 |
| 52~36 | Power Cord Of Amplifier | | 1 |
| 52~37 | 3×10mm_Self Tapping Screw | | 2 |
| 53 | Top Motor Cover | | 1 |
| 54 | 300mm_Speed Adjustment Switch W/Cable | | 1 |
| 55 | 300mm_Incline Adjustment Switch W/Cable | | 1 |
| 56 | M8 x 30 x 35 Cushion | | 6 |
| 57 | Wheel (A) (75 x 35) | | 2 |
| 58 | Wheel (B) (62 x 32 x 30) | | 2 |
| 59 | Foot Rail Cap (L) | | 1 |
| 60 | Foot Rail Cap (R) | | 1 |
| 61 | Frame Base Cap (L) | | 1 |
| 62 | Frame Base Cap (R) | | 1 |
| 63 | Left Handgrip Side Cap (L) | | 1 |

| | | | |
|-----|---|--|---|
| 65 | Left Handgrip Side Cap (R) | | 1 |
| 66 | Right Handgrip Side Cap (L) | | 1 |
| 67 | Right Handgrip Side Cap (R) | | 1 |
| 68 | Rear Adjustment Base (R) | | 1 |
| 69 | Rear Adjustment Base (L) | | 1 |
| 70 | Motor Cover Anchor | | 2 |
| 71 | Nylon Washer (A) (10 x 24 x 3T) | | 2 |
| 72 | Nylon Washer (B) (13 x 50 x 3T) | | 4 |
| 73 | Foot Pad (30 x 3/8) | | 2 |
| 74 | Sensor Rack | | 1 |
| 75 | 800mm Ellipse Safety Key | | 1 |
| 76 | Belt Guide | | 2 |
| 77 | Wheel Sleeve (14 x 10 x 35) | | 2 |
| 78 | Magnet - 10 (slug is sent with magnet) | | 2 |
| 79 | Foot Rail | | 2 |
| 80 | 1/2" x 1-1/4" Carriage Bolt | | 2 |
| 81 | 1/2" x 1" Hex Head Screw | | 2 |
| 82 | 3/8" x 4-1/2" Socket Head Cap Screw | | 1 |
| 83 | 3/8" x 3-3/4" Button Head Socket Screw | | 1 |
| 84 | 3/8" x 1-1/2" Hex Head Screw | | 1 |
| 85 | 3/8" x 1" Hex Head Screw | | 4 |
| 86 | 3/8" x 2" Thumb Head Socket Screw | | 2 |
| 87 | 5/16" x 1" Button Head Socket Screw | | 2 |
| 88 | 5/16" x 2-3/4" Button Head Socket Screw | | 2 |
| 89 | M8 x 60m/m Hex Head Screw | | 1 |
| 90 | M8 x 80m/m Socket Head Cap Screw | | 2 |
| 92 | M8 x 35m/m Flat Head Countersink Screw | | 8 |
| 93 | M3 x 10m/m Phillips Head Screw | | 1 |
| 94 | M5 x 20m/m Phillips Head Screw | | 1 |
| 96 | 5/16" x 42 m/m Phillips Head Screw | | 1 |
| 97 | M5 Nyloc Nut | | 1 |
| 98 | 1/2" x 8T Nyloc Nut | | 4 |
| 99 | 3/8" x 7T Nyloc Nut | | 4 |
| 100 | 5/16" x 6T Nyloc Nut | | 3 |
| 101 | M8x 8T Nyloc Nut | | 1 |
| 102 | 3/8" x 6.5T Nut | | 3 |
| 103 | M3 Nut | | 1 |
| 104 | ψ35 x ψ5/16" x 1.5T Flat Washer | | 2 |
| 105 | ψ25 x ψ10 x 1.5T Flat Washer | | 4 |
| 106 | ψ19 x ψ10 x 1.5T Flat Washer | | 4 |
| 107 | ψ5 x ψ10 x 1.0T Flat Washer | | 2 |
| 108 | ψ5/16" x ψ18 x 1.5T Flat Washer | | 1 |
| 109 | ψ5 x ψ12 x 1.0T Flat Washer | | 1 |
| 110 | ψ5 x ψ15 x 1.0T Flat Washer | | 2 |

| | | | |
|-----|--|--------|----|
| 111 | ψ6×ψ23×ψ13×5.5T×3T_Nylon Dished Washer | | 4 |
| 112 | ψ5.5 x 27x 60 x 1.0Tx2.5H_Concave Washer | | 4 |
| 113 | ψ10 x 2T_Split Washer | | 8 |
| 114 | M3_Split Washer | | 1 |
| 115 | M5_Raised Washer | | 4 |
| 116 | 4x12m/m_Self Tapping Screw | | 4 |
| 117 | 5x16m/m_Tapping Screw | | 61 |
| 118 | 5x19m/m_Tapping Screw | | 1 |
| 119 | 3.5 x 6 m/m_Self Tapping Screw | | 2 |
| 120 | 5 x 16m/m_Tapping Screw | | 13 |
| 122 | 3.5 x 12 m/m_Self Tapping Screw | | 31 |
| 124 | 3x10 m/m_Tapping Screw | | 4 |
| 125 | 4x76m/m_Self Tapping Screw | | 2 |
| 126 | 3.5 x 16 m/m_Tapping Screw | | 6 |
| 127 | 3 x 10 m/m_Self Tapping Screw | | 2 |
| 128 | Iron Plate Nut | | 6 |
| 130 | 5/16" x 1/2" Button Head Socket Screw | | 8 |
| 131 | Combination M5 Allen Wrench & Phillips Head Screw Driver | | 1 |
| 132 | M6_Allen Wrench | | 1 |
| 133 | 3/8"×1-3/4" Button Head Socket Screw | | 4 |
| 134 | M5×10mm Phillips Head Screw | | 8 |
| 135 | 3×8mm_Self Tapping Screw | | 6 |
| 136 | Controller Back Plate | | 1 |
| 137 | Left Connecting Cap (Top) | | 1 |
| 138 | Left Connecting Cap (Bottom) | | 1 |
| 139 | Right Connecting Cap (Top) | | 1 |
| 140 | Right Connecting Cap (Bottom) | | 1 |
| 141 | Top Motor Cover Plate | | 1 |
| 142 | Chest Strap | | 1 |
| 143 | Front Motor Cover | | 1 |
| 144 | Ellipse End Cap | | 2 |
| 145 | 13mm Bolt Cap | | 2 |
| 146 | 400mm Audio Cable | | 1 |
| 147 | 12 x 5.5T Plastic Washer | | 4 |
| 149 | Drink Bottle | | 1 |
| | Hardware Kit | 003003 | 1 |
| | Poly Sticker (console) | 003101 | 1 |
| | Transformer | 022791 | 1 |
| | Upper Display Board | 004118 | 1 |
| | Lower Board | 004117 | 1 |