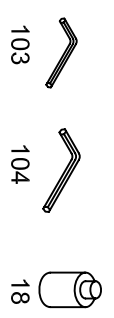
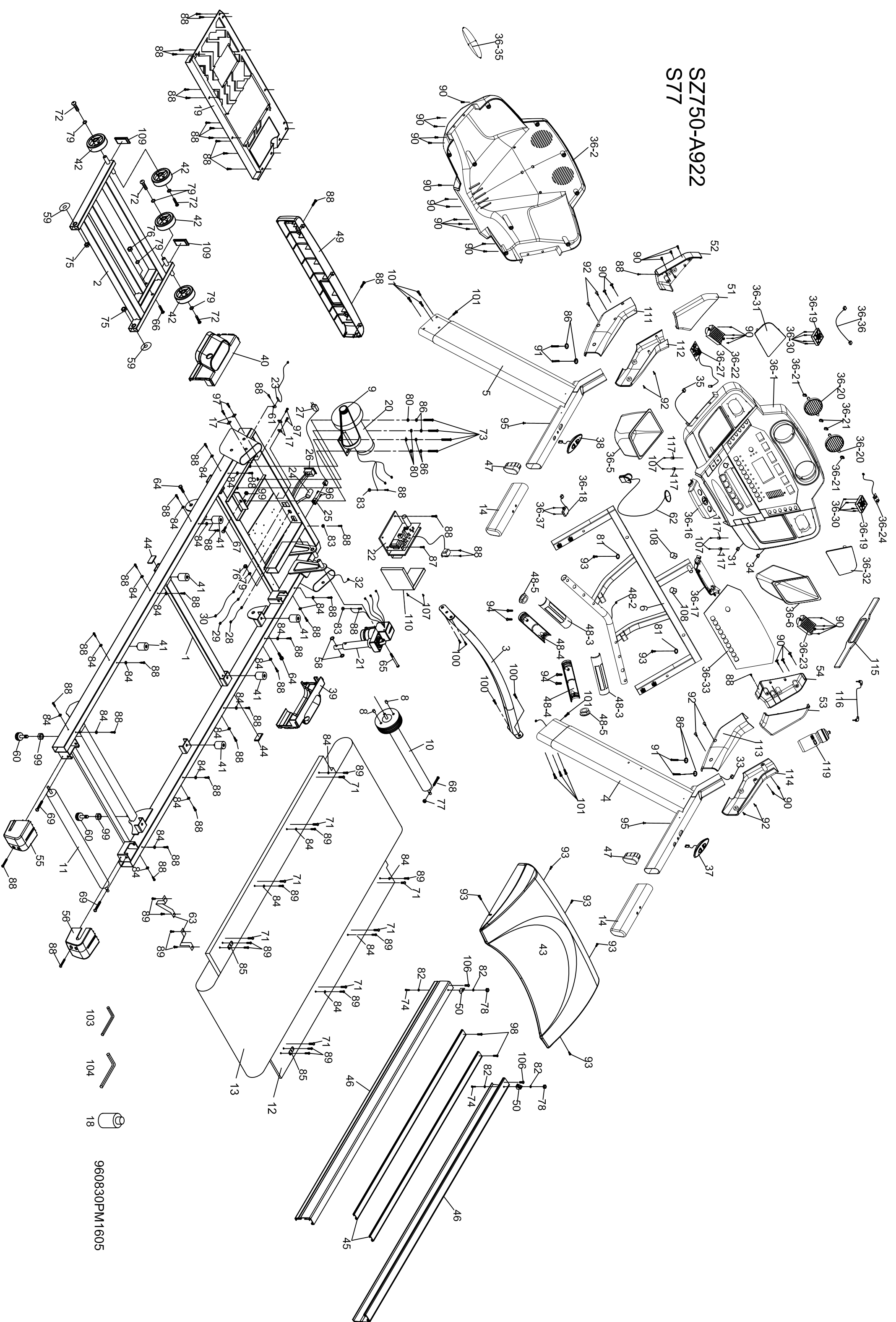


SZ750-A922 S77



960830PM1605

VS77 (577887) Part List

| Parts # | Description | Qty |
|---------|--|-----|
| 1 | Main Frame | 1 |
| 2 | Incline Bracket | 1 |
| 3 | Handrail Support | 1 |
| 4 | Right Handrail Assembly | 1 |
| 5 | Left Handrail Assembly | 1 |
| 6 | Console Support | 1 |
| 8 | ~10 Magnet (slug is sent with magnet) | 2 |
| 9 | Drive Belt | 1 |
| 10 | Front Roller W/Pulley | 1 |
| 11 | Rear Roller | 1 |
| 12 | Running Deck (1425 x 614 x 25mm) | 1 |
| 13 | Running Belt (510 x 3210 x 2.5) | 1 |
| 14 | Handle Bar Axle Inner Cover | 2 |
| 17 | Wire Tie Mount | 4 |
| 18 | Lubricant | 1 |
| 19 | Frame Cover | 1 |
| 20 | Motor, 3.5HP Turdan(blk/rd wire=400mm/ground wire=400mm) | 1 |
| 21 | Incline Motor | 1 |
| 22 | Controller | 1 |
| 23 | Sensor W/Cable | 1 |
| 24 | Breaker | 1 |
| 25 | Power Socket | 1 |
| 26 | On/Off Switch | 1 |
| 27 | Power Cord | 1 |
| 28 | 100mm x 764 x 764 Connecting Wires (Black) | 1 |
| 29 | 150mm x 764 x 764 Connecting Wires (White) | 1 |
| 30 | 150mm x 764 x 764 Connecting Wires (Black) | 1 |
| 31 | 800 mm Computer Cable (Upper) | 1 |
| 32 | 550 mm Computer Cable (Lower) | 1 |
| 33 | 1150 mm Computer Cable (Middle) | 1 |
| 34 | 800 mm Speed Cable (Upper) | 1 |
| 35 | 800 mm Incline Cable (Upper) | 1 |
| 36 | Console Assembly | 1 |
| 36~1 | Top Console Cover | 1 |
| 36~2 | Bottom Console Cover | 1 |
| 36~5 | Beverage Holder (L) | 1 |
| 36~6 | Beverage Holder (R) | 1 |
| 36~16 | Front Console Cover (Top) | 1 |
| 36~17 | Front Console Cover (Bottom) | 1 |
| 36~18 | 300mm Safety Switch W/Moudule | 1 |
| 36~19 | Fan | 2 |
| 36~20 | Deflector Fan Grill | 2 |
| 36~21 | Fan Grill Anchor | 4 |
| 36~22 | 700mm Speaker | 1 |

| | | | |
|-------|--------------------------------------|--|---|
| 36~23 | 250mm_Speaker | | 1 |
| 36~24 | Amplifier | | 1 |
| 36~27 | Receiver, HR Assembly | | 1 |
| 36~30 | 3.5x32 m/m_Self Tapping Screw | | 8 |
| 36~31 | Speaker Iron Net (L) | | 1 |
| 36~32 | Speaker Iron Net (R) | | 1 |
| 36~33 | Face Plate Lens Cover | | 1 |
| 36~35 | Bottom Console Badge | | 1 |
| 36~36 | Power Cord Of Amplifier | | 1 |
| 36~37 | 3x10 m/m_Self Tapping Screw | | 2 |
| 37 | Speed Adjustment Switch W/Cable | | 1 |
| 38 | Incline Adjustment Switch W/Cable | | 1 |
| 39 | Console Mast Side Cap (R) | | 1 |
| 40 | Console Mast Side Cap (L) | | 1 |
| 41 | Cushion | | 6 |
| 42 | Transportation Wheel | | 4 |
| 43 | Top Motor Cover | | 1 |
| 44 | □20x40_Square End Cap | | 2 |
| 45 | Foot Rail | | 2 |
| 46 | Outside Foot Rail | | 2 |
| 47 | Ellipse End Cap | | 2 |
| 48 | Handpulse W/Cable Assembly | | 2 |
| 48~2 | Handpulse Wires | | 1 |
| 48~3 | Handpulse Assembly Top | | 2 |
| 48~4 | Handpulse Assembly Bottom | | 2 |
| 48~5 | Handpulse End Cap | | 2 |
| 49 | Front Motor Cover | | 1 |
| 50 | Motor Cover Anchor | | 2 |
| 51 | Left Connecting Cap (Top) | | 1 |
| 52 | Left Connecting Cap (Bottom) | | 1 |
| 53 | Right Connecting Cap (Top) | | 1 |
| 54 | Right Connecting Cap (Bottom) | | 1 |
| 55 | Rear Adjustment Base (L) | | 1 |
| 56 | Rear Adjustment Base (R) | | 1 |
| 58 | φ 24 x φ 10 x 3T_Nylon Washer (A) | | 2 |
| 59 | φ 50 x φ 13 x 3T_Nylon Washer (B) | | 2 |
| 60 | Foot Pad | | 2 |
| 61 | Sensor Rack | | 1 |
| 62 | Ellipse Safety Key | | 1 |
| 63 | Belt Guide | | 2 |
| 64 | 1/2" x 1" _Hex Head Screw | | 2 |
| 65 | 3/8" x 4-1/2" _Socket Head Cap Screw | | 1 |
| 66 | 3/8" x 4" _Socket Head Cap Screw | | 1 |
| 67 | 3/8" x 1-3/4" _Hex Head Screw | | 1 |
| 68 | M8 x 60m/m _Hex Head Screw | | 1 |
| 69 | M8 x 80m/m _Socket Head Cap Screw | | 2 |

| | | | |
|-----|--|--|----|
| 71 | M8 x 35m/m Flat Head Countersink Screw | | 8 |
| 72 | 3/8" x 3/4" Button Head Socket Screw | | 4 |
| 73 | 3/8" x 1" Hex Head Screw | | 4 |
| 74 | M5x30m/m Phillips Head Screw | | 2 |
| 75 | 1/2"x15T_Nyloc Nut | | 2 |
| 76 | 3/8" Nyloc Nut | | 2 |
| 77 | M8_Nyloc Nut | | 1 |
| 78 | M5_Nut | | 2 |
| 79 | φ 19 x φ 10 x 1.5T_Flat Washer | | 6 |
| 80 | φ 25 x φ 10 x 1.5T_Flat Washer | | 4 |
| 81 | φ 5 x φ 15 x 1.0T_Flat Washer | | 2 |
| 82 | φ 5 x φ 10 x 1.0T_Flat Washer | | 4 |
| 83 | M5_Raised Washer | | 3 |
| 84 | φ 6.5 x 25 x 1.0T×4.5H_Concave Washer | | 26 |
| 85 | φ 5.5 x 25 x 60 x 1.0T×3.5H_Concave Washer | | 2 |
| 86 | 3/8"×2.0T_Split Washer | | 8 |
| 87 | 5 x19 m/m Tapping Screw | | 1 |
| 88 | 5 x16 m/m Tapping Screw | | 45 |
| 89 | 4x12 m/m Self Tapping Screw | | 14 |
| 90 | 3.5x12 m/m Self Tapping Screw | | 33 |
| 91 | 3/8"×1-3/4" Button Head Socket Screw | | 4 |
| 92 | M5×10mm Phillips Head Screw | | 8 |
| 93 | 5x16 m/m Tapping Screw | | 7 |
| 94 | 3x10 m/m Tapping Screw | | 4 |
| 95 | 4x50 m/m Self Tapping Screw | | 2 |
| 96 | 3x10 m/m Self Tapping Screw | | 2 |
| 97 | 3.5 x12m/m Tapping Screw | | 4 |
| 98 | 4 x25m/m Self Tapping Screw | | 2 |
| 99 | 3/8" Nut | | 3 |
| 100 | 5/16" x 3/4" Button Head Socket Screw | | 4 |
| 101 | 5/16" x 1/2" Button Head Socket Screw | | 8 |
| 103 | Combination M5 Allen Wrench & Phillips Head Screw Driver | | 1 |
| 104 | M6 Allen Wrench | | 1 |
| 106 | 5 x 45m/m Tapping Screw | | 2 |
| 107 | 3×8mm Self Tapping Screw | | 6 |
| 108 | 13m/m Bolt Cap | | 2 |
| 109 | □25x50_Square End Cap | | 2 |
| 110 | Controller Back Plate | | 1 |
| 111 | Left Handgrip Side Cap (L) | | 1 |
| 112 | Left Handgrip Side Cap (R) | | 1 |
| 113 | Right Handgrip Side Cap (L) | | 1 |
| 114 | Right Handgrip Side Cap (R) | | 1 |
| 115 | Chest Strap (POLAR) | | 1 |
| 116 | Audio Cable | | 1 |
| 117 | φ 12×5.5T_Plastic Washer | | 4 |

| | | | |
|-----|------------------------|--------|---|
| 119 | Drink Bottle | | 1 |
| | Poly Sticker (Console) | 003103 | 1 |
| | Hardware Kit | 003039 | |