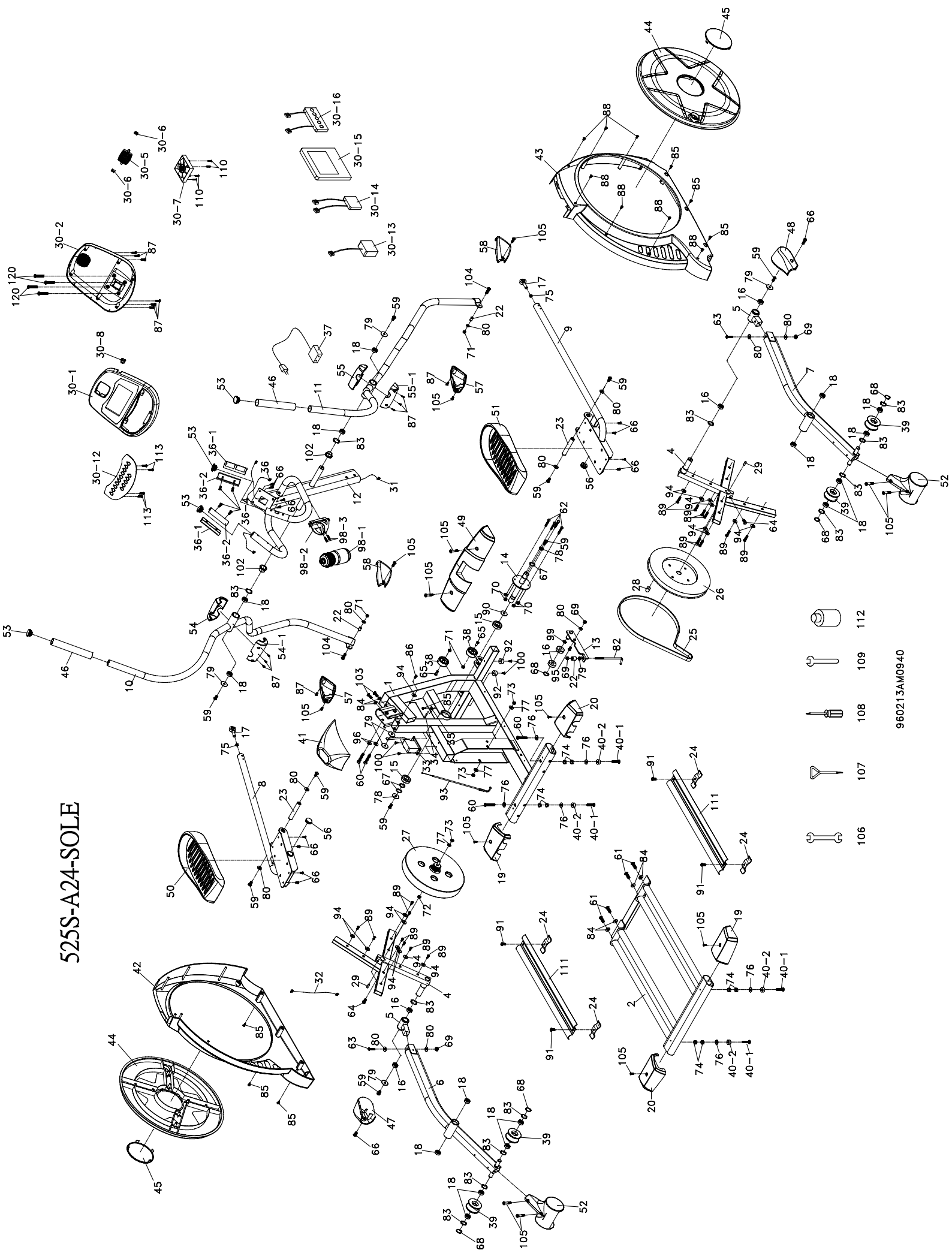
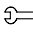


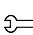



525S-A24-SOLE



-  106
-  107
-  108
-  109
-  112

960213AM0940

E25 (525081) Parts List_Sole

NO.	DESCRIPTION		O'TY
1	Main Frame		1
2	Rail Assembly		1
4	Cross Bar		2
5	Bushing Housing, Pedal Arm		2
6	Pedal Arm(L) Assy.		1
7	Pedal Arm(R) Assy.		1
8	Connecting Arm (L)		1
9	Connecting Arm (R)		1
10	Handle Bar (L)		1
11	Handle Bar (R)		1
12	Console Mast		1
13	Idler Arm Assy.		1
14	Pulley Axle		1
15	Bearing for Pulley		2
16	Bearing for Idler Wheel		6
17	Fish-eye Bearing - Rod End Bearing		2
18	6003_Bearing fpr slide wheel		16
19	Rear Stabilizer Cover(A)		2
20	Rear Stabilizer Cover(B)		2
21	Oval End Cap		2
22	ϕ 11.9 x ϕ 8.5 x 16m/m_Fish-eye Sleeve		3
23	ϕ 17 x 108 L x 5/16" _Axle for Pedal		2
24	Retaining Bracket, Aluminum Track		4
25	Belt - 500J/1270J		1
26	Drive Pulley Assy. w/Axle (Pulley ONLY 000908)		1
27	Flywheel		1
28	Magnet		1
29	Woodruff Key		2
30	Console		1
30~1	Top Console Cover		1
30~2	Bottom Console Cover		1
30~5	Deflector Fan Grill		1
30~6	Fan Grill Anchor		2
30~7	Fan Motor		1
30~8	Fan Power Switch		1
30~12	Inner Console Cover		1
31	1000m/m_Computer Cable-Main Wiring Harness		1
32	DC Power Cable-Power Input Jack		1
33	Gear Motor		1

34	Sensor W/Cable		1
35	Sensor Rack		1
36	Handpulse W/Cable Assy. (SET)		2
36~1	Handpulse Assembly Top (SET)		2
36~2	Handpulse Assembly Bottom (SET)		2
36~3	Handpulse Cable (SET)		1
36~4	ϕ 3x20 m/m Tapping Screw		4
37	Power Supply		1
38	ϕ 54 Transportation Wheel		2
39	ϕ 72 Slide Wheel , Urethane Assy. w/Bearings		4
40~1	3/8" x 2" Flat Head Socket Screw		4
40~2	ϕ 35x10m/m Cushion Foot Pad		4
41	Console Mast Cover		1
42	Left Chain Cover		1
43	Right Chain Cover		1
44	Round Disk		2
45	Round Disk Cover (Access)		2
46	EVA Foam Upper For Handle Bar		2
47	Pedal Arm Cover (L)		1
48	Pedal Arm Cover (R)		1
49	Front Stabilizer Cover		1
50	Pedal (L)		1
51	Pedal (R)		1
52	Slide Wheel Cover		2
53	ϕ 32 (1.8T) Button Head End Cap		4
54	Front Handle Bar Cover (L) (SET)		1
54~1	Rear Handle Bar Cover (L) (SET)		1
55	Front Handle Bar Cover (R) (SET)		1
55~1	Rear Handle Bar Cover (R) (SET)		1
56	ϕ 32 (2.5T) Button Head End Cap		2
57	Connecting Arm Cover (L) (SET)		2
58	Connecting Arm Cover (R) (SET)		2
59	5/16" x 15m/m Hex Head Screw		10
60	3/8" x 2-1/4" Hex Head Screw		4
61	3/8" x 3-3/4" Hex Head Screw		4
62	1/4" x 3/4" Hex Head Screw		4
63	M8 x 50m/m Socket Head Cap Screw		2
64	M8x30m/m Socket Head Cap Screw		2
65	5/16" x 1- 3/4" Button Head Socket Screw		2
66	M5 x 10m/m Phillips Head Screw		14
67	ϕ 25 C Clip		3

68	ϕ 17 _ C Clip		5
69	M8 x 7T _ Nylon Nut		4
70	1/4" _ Nylon Nut		4
71	5/16" x 7T _ Nylon Nut		4
72	3/8" -UNF26 x 4T _ Nut		2
73	3/8" -UNF26 x 9T _ Nut		2
74	3/8" x 7T _ Nut		8
75	M12 _ Nut		2
76	3/8" x 19 x 1.5T _ Flat Washer		6
77	3/8" x 25 x 2T _ Flat Washer		2
78	5/16" x 35 x 1.5T _ Flat Washer		2
79	5/16" x 23 x 1.5T _ Flat Washer		6
80	5/16" x 20 x 1.5T _ Flat Washer		11
82	J Bolt - M8 x 170m/m		1
83	ϕ 17 _ Wavy Washer		12
84	3/8" x 23 x 1.5T _ Curved Washer		6
85	5x16 m/m _ Tapping Screw - Plated		7
86	4x15 m/m _ Self Tapping Screw		1
87	ϕ 3.5x12m/m _ Self Tapping Screw		14
88	4x19m/m _ Self Tapping Screw		7
89	5x16m/m _ Tapping Screw - Plated		16
90	ϕ 35x ϕ 25.5x5T _ Plastic Bushing		1
91	5/16" x 3/4" _ Hex Head Screw		4
92	ϕ 25x15m/m _ Food Pad (Leveler)		2
93	Steel Rope - Brake Adjustment Cable		1
94	1/4"x19m/m _ Flat Washer		17
95	M8 x20 m/m _ Carriage Bolt		1
96	3/8" x 2T _ Spring Washer		2
97	3/8" x 16 x 1.5T _ Flat Washer		1
98~1	Drink Bottle		1
98~2	Drink Bottle Holder		1
98~3	M5 x 12m/m _ Phillips Head Screw		2
99	ϕ 17x ϕ 23.5x1T _ Flat Washer		1
100	5x19m/m _ Tapping Screw		4
101	ϕ 2.3 x 6m/m _ Self Tapping Screw		16
102	Moving Arm Spacer (Handle Bar Axle)		2
103	3/8" x 3/4" _ Hex Head Screw		2
104	5/16" x 1-1/4" _ Hex Head Screw		2
105	M5 x 15m/m _ Phillips Head Screw		14
106	13/14m/m _ Wrench		1
107	Short Phillips Screw Driver		1

108	Phillips Head Screw Driver		1
109	12m/m_ Wrench		1
110	ϕ 3.5x30m/m_ Self Tapping Screw		4
111	Aluminum Track		2
113	ϕ 3.5x12m/m_ Self Tapping Screw		4
118	ϕ 2.6x6m/m _ Self Tapping Screw		2
	Hardware Kit	000800	1
	Overlay - LCD	000787	1
	Overlay - Button	000804	1
	Decal (Front)	000879	1
	Decal (Side) - SOLE	000880	2
	Decal (Console)	000881	1