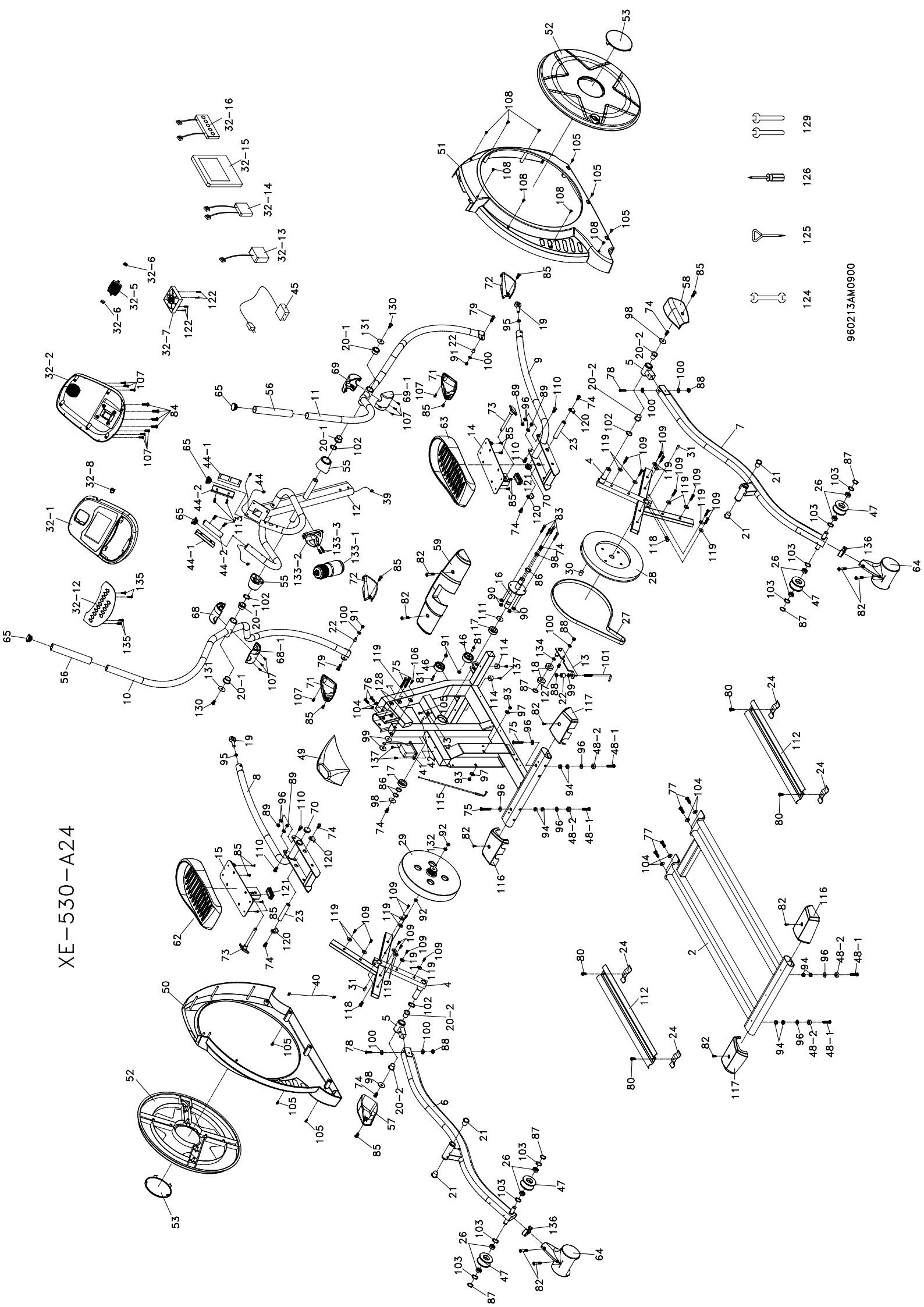


XE-530-A24



E55 (555086) Parts List

NO.	DESCRIPTION	QTY
1	Main Frame	1
2	Rail Assembly	1
4	Cross Bar	2
5	Bushing Housing, Pedal Arm	2
6	Pedal Arm Assy. (L)	1
7	Pedal Arm Assy. (R)	1
8	Connecting Arm Assy. (L)	1
9	Connecting Arm Assy. (R)	1
10	Handle Bar Assy. (L)	1
11	Handle Bar Assy. (R)	1
12	Console Mast	1
13	Idler Arm Assy.	1
14	Footpad Support Plate (R)	1
15	Footpad Support Plate (L)	1
16	Drive Pulley Axle	1
17	Bearing for Pulley	2
18	Bearing for Idler Wheel	2
19	Fish-eye Bearing - Rod End Bearing	2
20~1	Copper Bushing (30% Copper) (Handle Bar)	4
20~2	Copper Bushing (50% Copper) (Pedal Arm)	4
21	ϕ 31 x ϕ 25.5 x ϕ 19 x 16+3T_ Bushing	4
22	ϕ 11.9 x ϕ 8.5 x 16m/m_ Fish-eye Sleeve	3
23	ϕ 19 x 111 L x 5/16" _Axle for Pedal	2
24	Retaining Bracket, Aluminum Track	4
26	Bearing, Slide Wheel	8
27	Belt - 500J/1270J	1
28	Drive Pulley Assy. w/Axle (Pulley ONLY = 000908)	1
29	Flywheel	1
30	Magnet	1
31	Woodruff Key	2
32	Console	1
32~1	Top Console Cover	1
32~2	Bottom Console Cover	1
32~5	Deflector Fan Grill	1
32~6	Fan Grill Anchor	2
32~7	Fan Motor	1
32~8	Fan Switch	1
32~12	Button Keypad Insert - Inner Console Cover	1
39	1000m/m_ Computer Cable	1

40	DC Power Cable - Power Input Jack		1
41	Gear Motor		1
42	Sensor W/Cable		1
43	Sensor Rack		1
44	Handpulse W/Cable Comes as SET		2
44~1	Handpulse Assembly Top		2
44~2	Handpulse Assembly Bottom		2
44~3	Handpulse Cable		1
45	Power Supply		1
46	ϕ 54_Transportation Wheel		2
47	ϕ 72_Slide Wheel , Urethane		4
48~1	3/8" x 2" _ Flat Head Socket Screw		4
48~2	ϕ 35x10m/m_Cushion Foot Pad		4
49	Console Mast Cover		1
50	Left Chain Cover		1
51	Right Chain Cover		1
52	Round Disk		2
53	Round Disk Cover		2
55	Cover, Handle Bar Axle		2
56	EVA Foam Upper For Handle Bar		2
57	Pedal Arm Cover (L)		1
58	Pedal Arm Cover (R)		1
59	Front Stabilizer Cover		1
62	Pedal (L)		1
63	Pedal (R)		1
64	Slide Wheel Cover		2
65	ϕ 32 (1.8T)_ Button Head End Cap		4
68	Front Handle Bar Cover (L) Comes as SET		1
68~1	Rear Handle Bar Cover (L) Comes as SET		1
69	Front Handle Bar Cover (R) Comes as SET		1
69~1	Rear Handle Bar Cover (R) Comes as SET		1
70	ϕ 32 (2.5T)_ Round Head End Cap		2
71	Connecting Arm Cover (L) Comes as SET		2
72	Connecting Arm Cover (R) Comes as SET		2
73	Footpad Adjustment Pin		2
74	5/16" x 15m/m_Hex Head Screw		8
75	3/8" x 2-1/4" _Hex Head Screw		4
76	3/8" x 3/4" _Hex Head Screw		2
77	3/8" x 3-3/4" _Hex Head Screw		4
78	M8 x 50m/m_Socket Head Cap Screw		2
79	5/16" x 1-1/4" _Hex Head Screw		2

80	5/16" x 3/4" _ Hex Head Screw		4
81	5/16" x 1- 3/4" _ Button Head Socket Screw		2
82	M5 x 15m/m _ Button Head Socket Screw		10
83	1/4" x 3/4" _ Hex Head Screw		4
84	M5 x 12m/m _ Button Head Socket Screw		4
85	M5x10m/m _ Button Head Socket Screw		14
86	ϕ 25 _ C Clip		3
87	ϕ 17 _ C Clip		5
88	M8 x 7T _ Nylon Nut		4
89	3/8" x 7T _ Nylon Nut		4
90	1/4" _ Nylon Nut		4
91	5/16" x 7T _ Nylon Nut		4
92	3/8" -UNF26 x 4T _ Nut		2
93	3/8" -UNF26 x 9T _ Nut		2
94	3/8" x 7T _ Nut		8
95	M12 _ Nut		2
96	3/8" x 19 x 1.5T _ Flat Washer		10
97	3/8" x 25 x 2T _ Flat Washer		2
98	5/16" x 35 x 1.5T _ Flat Washer		4
99	5/16" x 23 x 1.5T _ Flat Washer		2
100	5/16" x 18x 1.5T _ Flat Washer		7
101	J Bolt - M8 x 170m/m		1
102	ϕ 25 _ Wavy Washer		6
103	ϕ 17 _ Wavy Washer		8
104	3/8" x 23 x 2T _ Curved Washer		6
105	5x16m/m _ Tapping Screw - Plated		7
106	4x15m/m _ Self Tapping Screw		1
107	ϕ 3.5x12m/m _ Self Tapping Screw		14
108	4x19m/m _ Self Tapping Screw		7
109	5x16m/m _ Tapping Screw - Plated		16
110	3/8" x 3/4" _ Hex Head Screw		4
111	ϕ 35x ϕ 25.5x5T _ Plastic Bushing		1
112	Aluminum Track		2
113	ϕ 3x20m/m _ Tapping Screw		4
114	ϕ 25x15m/m _ Foot Pad		2
115	Steel Rope - Brake Adjustment Cable		1
116	Rear Stabilizer Cover (A)		2
117	Rear Stabilizer Cover (B)		2
118	M8x30m/m _ Socket Head Cap Screw		2
119	1/4"x19m/m _ Flat Washer		17
120	ϕ 8.5x1.5T _ L Washer - Anti Rotation Bracket		4

121	□30x60(2.0T) Square End Cap		2
122	φ 3.5x30m/m _ Self Tapping Screw		4
123	M5 x 50m/m _ Button Head Socket Screw		3
124	13/14m/m _ Wrench		1
125	Short Phillips Screw Driver		1
126	Phillips Head Screw Driver		1
127	M8 x20 m/m _ Carriage Bolt		1
128	3/8" x 2T _ Spring Washer		2
129	12m/m _ Wrench		2
130	3/8" x 5/8" _ Hex Head Screw		2
131	3/8" x 35 x 2.0T _ Flat Washer		2
132	3/8" x 16 x 1.5T _ Flat Washer		1
133-1	Drink Bottle		1
133-2	Drink Bottle Holder		1
133-3	M5 x 12m/m _ Button Head Socket Screw		2
134	φ 17x φ 23.5x1T _ Flat Washer		1
135	φ 3.5x10m/m _ Self Tapping Screw		4
136	Oval End Cap		2
137	5x19 m/m Tapping Screw		4
	HARDWARE KIT	000824	1
	OVERLAY (LCD)	000787	1
	OVERLAY (BUTTON)	000804	1
	E55 DECAL (FRONT)	000950	1
	OVAL DECAL (SIDE)	000880	2
	CONSOLE DECAL	000881	1