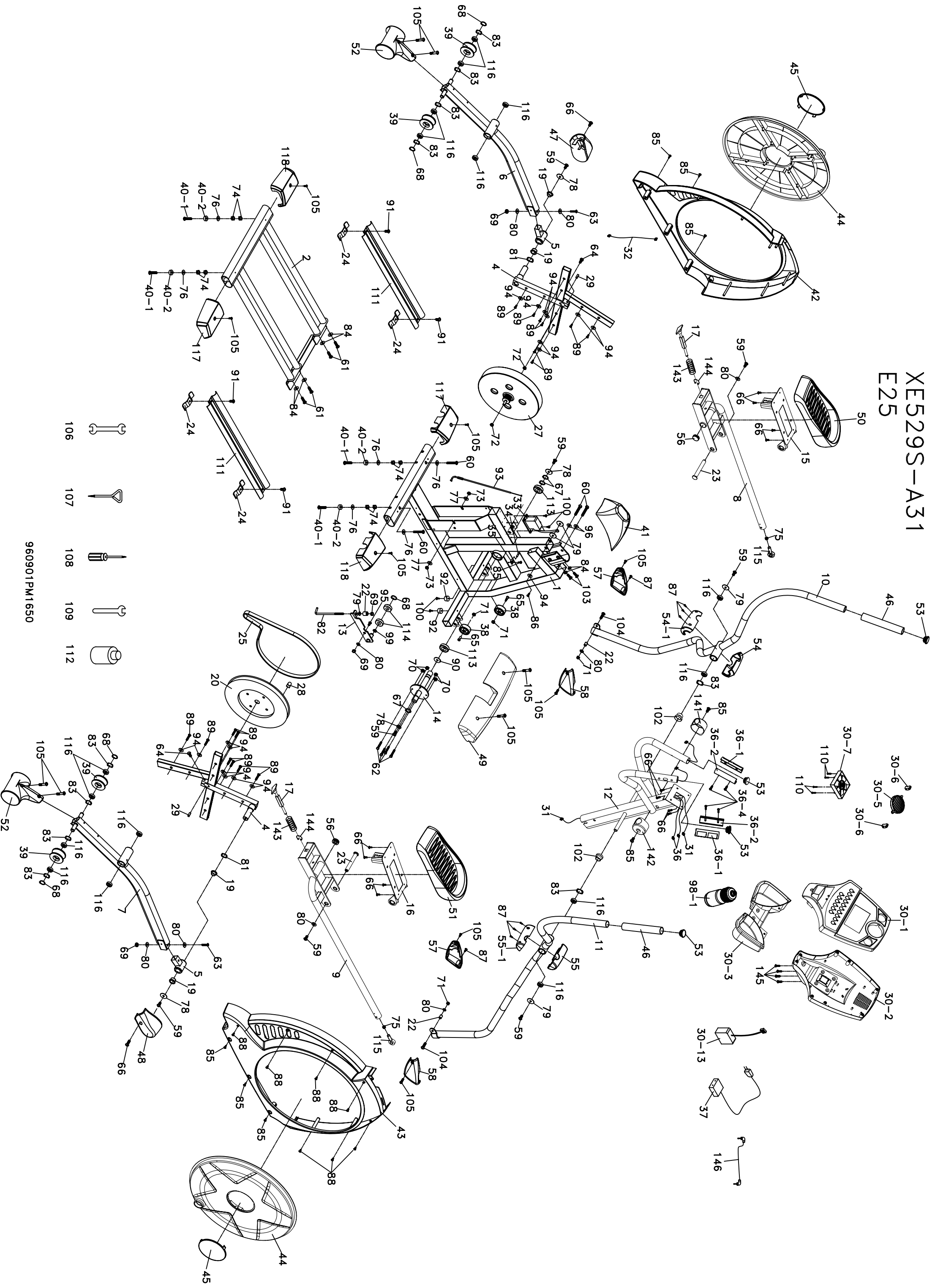


XE529S-A31 E25



- 106
- 107
- 108
- 109
- 112

960901PM1650

VE25 (525087) Part List

No.	Description	Qty.
1	Main Frame NEW	1
2	Rail Assembly	1
4	Cross Bar - Crank Weldment NEW	2
5	Bushing Housing w/IGUS bushing (Pedal Arm)	2
6	Pedal Arm Assy. (L) OLD but new Housing	1
7	Pedal Arm Assy. (R) OLD but new Housing	1
8	Connecting Arm Assy. (L) NEW	1
9	Connecting Arm Assy. (R) NEW	1
10	Handle Bar Assy. (L) NEW	1
11	Handle Bar Assy. (R) NEW	1
12	Console Mast NEW	1
13	Idler Wheel Assembly NEW-SAME AS OLD E35/55/95	13
14	Drive Pulley Axle	1
15	Foot Pad Support Plate (L) NEW	1
16	Foot Pad Support Plate (R) NEW	1
17	Pedal Adjustment Pull Pin NEW	2
19	ψ38×ψ31×ψ25×17+3T_Copper Bushing (50% Copper)-Pedal Arm NEW	4
20	Drive Pulley (330 x 10)	1
22	ψ11.9 x ψ8.5 x 16m/m_Rod-End Sleeve	3
23	Carriage Bolt- 19 x 15 x 110L x 5/16 Pedal Axle NEW	2
24	Retaining Bracket, Aluminum Track	4
25	Belt - 500J/1270J	1
27	Fly Wheel (292 x 40 x 10)	1
28	Magnet	1
29	7 x 7 x 20L Woodruff Key	2
30	Console Assembly NEW	1
30-1	Top Console Cover	1
30-2	Bottom Console Cover	1
30~3	Beverage Holder NEW	1
30-13	HR Receiver	
30-21	Speaker, Iron Net (L)	1
30-22	Speaker, Iron Net ®	1
31	1000mm_Computer Cable	1
32	DC Power Cable - Power Input Jack	1
33	Gear Motor	1
34	300mm_Sensor W/Cable	1
35	Sensor Rack	1
36	850mm_Handpulse W/Cable Assembly (w Top & Bottom Covers) NEW	2
36~1	Handpulse Assembly Top	2

36~2	Handpulse Assembly Bottom		2
36-4	ψ3x20m/m Tapping Screw		4
37	Adapter - 1.5 Amp		1
38	ψ62 x 8.2 x36L_ Transportation Wheel NEW		2
39	ψ78_ Slide Wheel , Urethane		4
40~1	3/8" x 2" _ Flat Head Socket Screw		4
40~2	ψ35 x 10 Leveling Foot - Cushion Foot Pad		4
41	Console Mast Cover		1
42	Chain Cover (L) (Stickers for Chain Cover #004082)		1
43	Chain Cover (R) (Stickers for Chain Cover #004082)		1
44	Round Disk , Crank		2
45	Round Disk Access Cover		2
46	ψ32×3T×420L_ Handgrip Foam		2
47	Pedal Arm Cover (L)		1
48	Pedal Arm Cover (R)		1
49	Front Stabilizer Cover NEW		1
50	Pedal (L)		1
51	Pedal (R)		1
52	Slide Wheel Cover NEW Material - PP		2
53	ψ32 (1.8T)_ Button Head End Cap		2
54	Front Handle Bar Cover (L) NEW COMES AS SET		1
54~1	Rear Handle Bar Cover (L) NEW		1
55	Front Handle Bar Cover (R) NEW COMES AS SET		1
55~1	Rear Handle Bar Cover (R) NEW		1
56	ψ32 (2.5T)_ Round Head End Cap		2
57	Connecting Arm Cover (L) COMES AS SET		2
58	Connecting Arm Cover (R)		2
59	5/16 x 15m/m Hex Head Screw		2
60	3/8" x 2-1/4" Hex Head Screw		1
61	3/8" x 3-3/4" Hex Head Screw		4
62	1/4" x 3/4" Hex Head Screw		4
63	M8 x 50(22m/m) Socket Head Cap Screw		2
64	M8x30(3M) Socket Head Cap Screw		2
65	5/16" x 2" Button Head Screw NEW		2
66	M5 x 10m/m Phillips Head Screw -Plated		4
67	ψ25 C Clip		3
68	ψ17 C Clip		5
69	M8 x 7T Nylon Nut		4
70	1/4" Nylon Nut		4
71	5/16" x 7T Nylon Nut		2
72	3/8" -UNF26 x 4T Nut		2
73	3/8" -UNF26 x 9T Nut		2

74	3/8" x 7T Nut		8
75	M12 Nut		2
76	3/8" x 19 x 1.5T Flat Washer		6
77	3/8" x 25 x 2T Flat Washer		2
78	5/16" x 35 x 1.5T Flat Washer		4
79	5/16" x 23 x 1.5T Flat Washer		2
80	5/16" x 20 x 1.5T Flat Washer		2
81	ψ25 Wave Washer		2
82	M8x170mm(60m/m) J Bolt		1
83	ψ17 Wave Washer		2
84	3/8" x 23 x 1.5T Curved Washer		2
85	5x16 Tapping Screw - Plated		9
86	4x15 Self Tapping Screw		1
87	3.5 x 12m/m Self Tapping Screw		14
88	4x19 Self Tapping Screw		7
89	5x16 Tapping Screw - Plated		16
90	35 x 25.5 x 5T Bushing		1
91	5/16" x 3/4" Hex Head Screw		4
94	1/4"x19 Flat Washer		17
95	M8 x20 Carriage Bolt		1
96	3/8" x 2T Spring Washer		1
100	5 x 19 Tapping Screw		4
101	2.3 x 6m/m Self Tapping Screw		12
102	Isolator		2
103	3/8" x 3/4" Hex Head Screw		2
104	5/16" x 1-1/4" Hex Head Screw		2
105	M5 x 15m/m Phillips Head Screw		14
106	13/14mm Wrench		1
107	Short Phillips Screw Driver		1
108	Phillips Head Screw Driver		1
109	12m/m Wrench		1
110	3.5 x 30m/m Self Tapping Screw		4
111	Aluminum Track		2
112	Lubricant		1
113	6005 Bearing, Pulley Axle		2
114	6203 Bearing for Idler Wheel		2
115	M12 x P1.75 Rod End Bearing		2
116	6003 Bearing for Slide Wheel		8
117	Rear Stabilizer Cover (A) NEW Material - PP		2
118	Rear Stabilizer Cover (B) NEW Material - PP		2
120	2.6 x 6m/m Self Tapping Screw		6
141	Handpulse Handle Cover (L) NEW		1

142	Handpulse Handle Cover (R) NEW		1
143	13.5 x 38.51 Locking Pin Spring NEW		2
144	ψ10(染黑)_C Clip NEW (Black)		3
145	ψ3.5x10m/m_Self Tapping Screw		4
146	Audio Cable NEW		1
	HARDWARE KIT	000800	1
	Overlay - LCD NEW	004039	1
	Overlay - Button NEW	004042	1
	Decal (Front) NEW	004043	1
	Decal (Side) NEW	004044	2
	Steel Rope - Brake Adjustment Cable	000141	
	Footplate Replacement Kit	006153	
	Locking Pin Bracket -(footplate replacement kit)	006238	2
	5x10 Phillips Head Screw -Plated(Locking pin bracket)	000051	8
	Upper Display	004120	1
	Lower Board	004123	1
	"CAUTION" Pinch Point Sticker	006170	
	"9V/1A" Sticker	004101	
	"9V/1.5A" Sticker	004102	
	"9V/2A" Sticker	004103	
	"MADE IN TAIWAN" Sticker	004104	