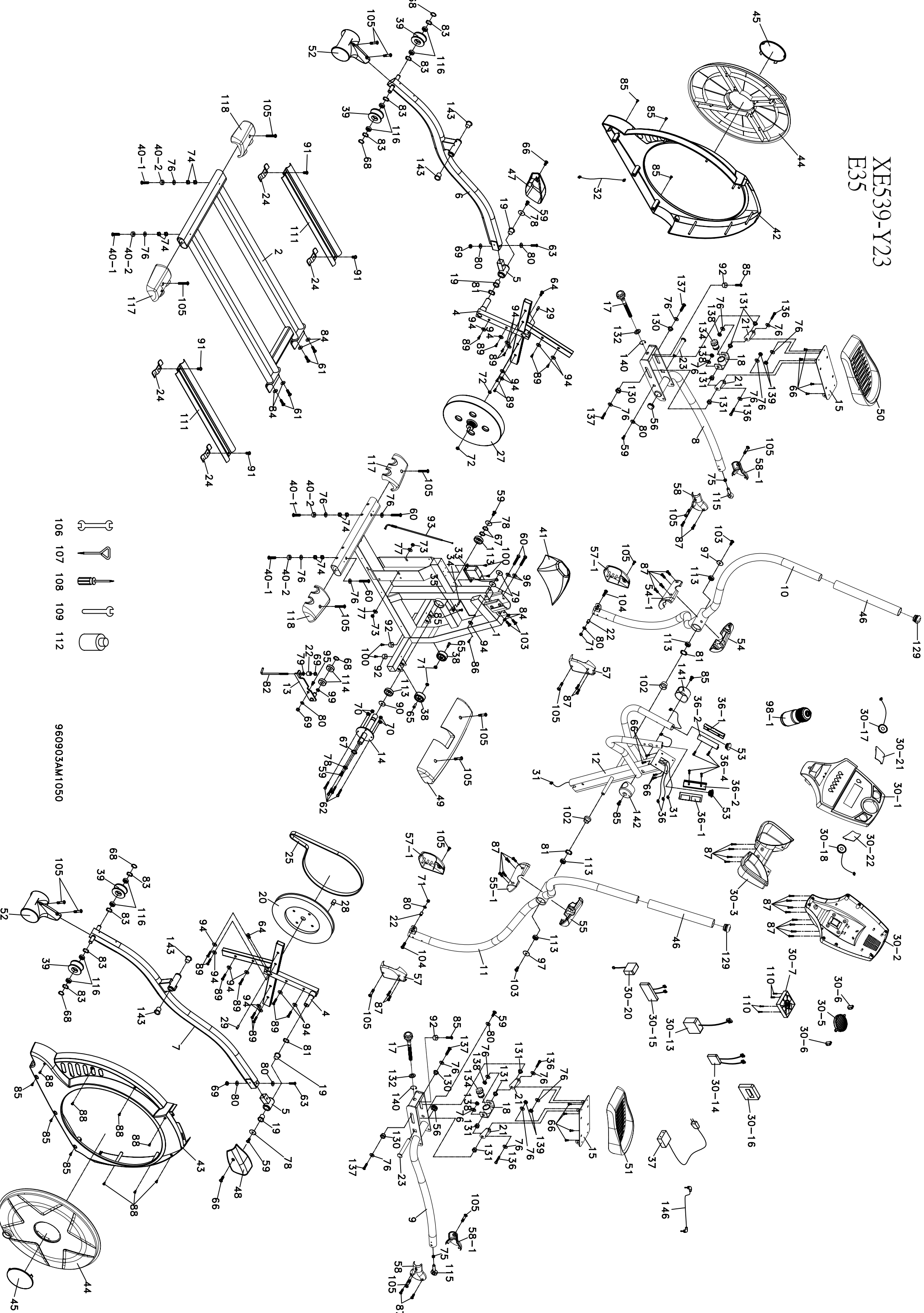


XE539-Y23 E35



- 106
- 107
- 108
- 109
- 112

960903AM1050

VE35(535087) PARTS LIST

Dyaco #	Description	Spirit #	Qty
2	Rail Assembly	000877	1
4	Cross Bar	000163	2
5	Bushing Housing w/IGUS bushing (Pedal Arm)	004105	2
6	Pedal Arm Assy (L)	004095	1
7	Pedal Arm Assy (R)	004096	1
8	Connecting Arm Assy (L) (Full Assy including Pedal)	004085	1
9	Connecting Arm Assy (R) (Full Assy including Pedal)	004086	1
10	Handle Bar Assy (L)	004091	1
11	Handle Bar Assy (R)	004092	1
12	Console Mast	004065	1
13	Idler Wheel Assembly	000817	1
14	Crank Axle - Pulley Axle	022148	1
15	Adjustable Pedal - Foot Pad Support Plate	004061	2
17	Pedal Adjustment Knob	004048	2
17-1	Pedal Adjustment Knob Decal (UP/DOWN)	004110	2
18	Pedal Adjustment Assembly	004056	2
19	IGUS Bushing	004202	4
20	Drive Pulley (330 x 10)	000908	1
21	Adjusting Plate	004067	4
22	ψ11.9 x ψ8.5 x 16m/m Rod End Sleeve	000199	3
23	Carriage Bolt- 19 x 15 x 110L x 5/16 Pedal Axle (Black)	000287	2
24	Retaining Bracket, Aluminum Track	000909	4
25	Belt - 500J/1270J	000146	1
27	Fly Wheel (Brake) (327 x 37 x 8 - 6 magnet)	006048	1
28	Magnet	010041	1
29	7 X 7 20L Woodruff Key	000198	2
30	Console Assembly	004032	1
30~1	Top Console Cover	004107	1
30~2	Bottom Console Cover	004106	1
30~3	Beverage Holder	004041	1
30~5	Deflector Fan Grill	000983	1
30~6	Fan Grill Anchor	000807	2
30~7	Console Fan	004303	1
30~13	Heart Rate Receiver	008070	1
30~14	Interface Daughter Board	004272	1
30~15	Console Controller (Upper Display)	004121	1
30~16	Console Key Pad (Lower Board)	004124	1
30~17	2W Speaker with Wire	004133	1
30~18	2W Speaker with Wire	004133	1
30~20	Amplifier Assembly (Board and power cord)	004271	1
30~20a	Amplifier Board	004153	1
30~20b	Amplifier Power Cord	004157	1
30~21	Speaker Iron Net (L)	004078	1
30~22	Speaker Iron Net (R)	004079	1
31	1300mm Computer Cable	001049	1
32	DC Power Cable - 800mm Power Input Jack	001050	1
33	Gear Motor	001051	1
34	300mm Sensor W/Cable	000145	1
35	Sensor Rack	022989	1
36	850mm Handpulse Assembly	008041	2
37	1.5 amp Adapter	000137	1
37-1	9V/1.5A Sticker	004102	
38	ψ62 x 8.2 x 36L Transportation Wheel	001019	2
39	~78 Slide Wheel, Urethane	006202	4
40~1	3/8" x 2" Thumb Head Socket Screw	022885	4
40~2	Leveling Foot - 35 x 10 x 10 Foot Pad	022943	4
41	Console Mast Cover	000819	1
42	Chain Cover (L)	000801	1
43	Chain Cover (R)	000802	1
44	Round Disk Cover, Crank	000175	2
45	Round Disk Cover	000700	2
46	ψ38×3t×420L Handgrip Foam	004004	2
47	Pedal Arm Cover (L)	000541	1
48	Pedal Arm Cover (R)	000543	1
49	Front Stabilizer Cover	004015	1
50	Pedal (L)	000539	1
51	Pedal (R)	000848	1
52	Slide Wheel Cover	004023	2
53	ψ32 (1.8T) Button Head End Cap	022069	2
54 & 54~1	Front Handle Bar Cover (L Set)	004069	1
55 & 55~1	Front Handle Bar Cover (R Set)	004070	1
56	Pedal End Cover-Bolt Cap 32 (2.5T) Round Head	000841	2
57 & 57~1	Connecting Arm Cover A (L & R Set)	004028	2
58 & 58~1	Connecting Arm Cover B (L & R Set)	004030	2
59	5/16" x 15m/m Hex Head Screw	022803	6
60	3/8" x 2-1/4" Hex Head Screw	020623	4
61	3/8" x 3-3/4" Hex Head Screw	021707	4
62	1/4" x 3/4" Hex Head Screw	030097	4
63	M8 x 50 Socket Head Cap Screw	022139	2
64	M8x30 Socket Head Cap Screw	010087	2
65	5/16" x 2" Button Head Socket Screw	010092	2
66	M5x10 Phillips Head Screw - plated	000051	14
67	ψ25 C Clip	000195	3
68	ψ17 C Clip	000196	5
69	M8 x 7T Nyloc Nut	022288	4
70	1/4" Nyloc Nut	030098	4
71	5/16" x 7T Nyloc Nut	000081	4
72	3/8" -UNF26 x 4T Nut	010094	2
73	3/8" -UNF26 x 9T Nut	010095	2
74	3/8" x 7T Nut	010108	8
75	M12 Nut	022794	2
76	3/8" x 19 x 1.5T Flat Washer	000076	22
77	3/8" x 25 x 2T Flat Washer	010098	2
78	5/16" x 35 x 1.5T Flat Washer	010099	4
79	5/16" x 23 x 1.5T Flat Washer	022908	3
80	5/16" x 20 x 1.5T Flat Washer	022918	9
81	ψ25 Wave Washer	022698	4
82	J Bolt (M8x170mm) (60mm)	010142	1
83	ψ17 Wavy Washer	022700	8
84	3/8" x 23 x 1.5T Curved Washer	000074	6
85	5x16 Tapping Screw - plated	010150	11
86	4x15 Self Tapping Screw	030054	1
87	ψ3.5x12m/m Self Tapping Screw	010113	28
88	4x19 Self Tapping Screw	030065	7
89	5x16 Tapping Screw - plated	010150	16
90	35 x 25.5 x 5T Plastic Bushing	000148	1
91	5/16" x 3/4" Hex Head Screw	020340	4
92	ψ25x15 Foot Pad	010124	4
93	310mm Steel Rope (Brake Adjustment Cable)	000141	1
94	1/4"x19 Flat Washer	022919	17
95	M8 x20 Carriage Bolt	030094	1
96	3/8" x 2T Split Washer	000053	2
97	3/8"×30×2T Flat Washer	006045	2
98~1	Drink Bottle	000844	1
99	ψ17xψ23.5x1T Flat Washer	022975	1
100	5x19 Tapping Screw	030057	4
102	ψ26×ψ35×ψ45×10T Isolator	000291	2
103	3/8" x 3/4" Hex Head Screw	000060	4
104	5/16" x 1-1/4" Hex Head Screw	022763	2
105	M5 x 15m/m Phillips Head Screw	000913	18
106	13/14m/m Wrench	022596	1
107	Short Phillips Head Screw Driver	023109	1
108	Phillips Head Screw Driver	023091	1
109	12mm Wrench	000342	1
110	ψ3.5x30m/m Self Tapping Screw	030030	4
111	Aluminum Track (2-hole)	000152	2
112	Lubricant	022271	1
113	6005 Bearing, Crank Axle	021951	6
114	6203 Bearing for Idler Wheel	021987	2
115	M12 x P1.75 Fish-eye Bearing	000200	2
116	6003 Bearing for Slide Wheel	010043	8
117	Rear Stabilizer Cover (A)	000540	2
118	Rear Stabilizer Cover (B)	000852	2
129	ψ38(2.0T) Button Head End Cap	022024	2
130	ψ14×ψ10×9T Pedal Bushing	004031	4
131	ψ19×ψ14×ψ10×(5+4)T Pedal Bushing	004033	8
132	ψ16.1×ψ31×3T Nylon Washer	023216	2
134	Threaded Bushing (36.5x45L)	006037	2
136	3/8"×19 Hex Head Screw	004062	4
137	M10×40mm Hex Head Screw	004063	4
138	M10×8T Nyloc Nut	004064	4
139	3/8"×7T Nyloc Nut	010108	4
140	ψ16 C Clip	004034	2
141	Handle Bar Axle Cover (L)	004016	1
142	Handle Bar Axle Cover (R)	004017	1
143	ψ31×ψ25.5×ψ19×16+3T Plastic Bushing	022699	4
146	Audio Cable	004000	1
	Hardware Kit	004040	1
	Console Overlay (LCD)	004035	1
	Console Overlay (Button)	004036	1
	Decal (Front)	004037	1
	Decal (Side)	004038	2
	Audio Input Jack	004254	1
	"MADE IN TAIWAN" Sticker	004104	