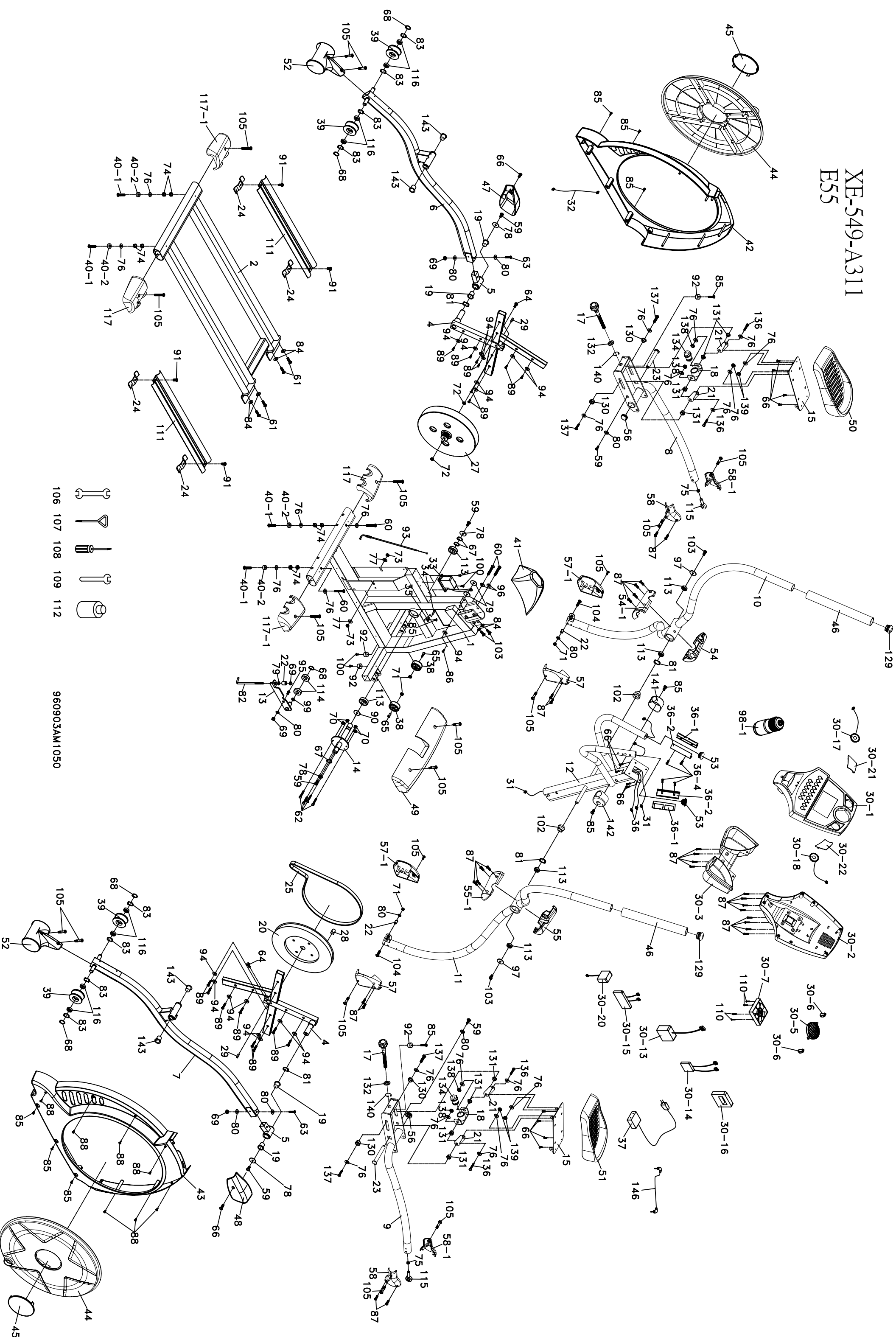


# XE-549-A311 E55



- 106
- 107
- 108
- 109
- 112

960903AM1050

## VE55 (555087) Part List\_Sole

Parts#	Description	Qty
1	Main Frame	1
2	Rail Assembly	1
4	Cross Bar	2
5	Bushing Housing w/IGUS bushing (Pedal Arm)	2
6	Pedal Arm Assy (L)	1
7	Pedal Arm Assy ®	1
8	Connecting Arm Assy (L) (Full Assy including Pedal)	1
9	Connecting Arm Assy ® (Full Assy including Pedal)	1
10	Handle Bar Assy (L)	1
11	Handle Bar Assy (R)	1
12	Console Mast	1
13	Idler Wheel Assembly	1
14	Drive Pulley Axle	1
15	Adjustable Pedal	2
17	Pedal Adjustment Knob	2
18	Pedal Adjustment Assembly	2
19	ψ38×ψ31×ψ25×17+3T_Copper Bushing (80% Copper )-Pedal Arm	4
20	Drive Pulley (330x10)	1
21	Adjusting Plate	4
22	ψ11.9 x ψ8.5 x 16m/m_Rod-End Sleeve	3
23	Carriage Bolt (19x101L) - Black	2
24	Retaining Bracket, Aluminum Track	4
25	Belt (500J/1270J)	1
27	Fly Wheel (327 x 37 x 8) 6 magnet	1
28	Magnet	1
29	Woodruff Key	2
30	Console Assembly	1
30~1	Top Console Cover	1
30~2	Bottom Console Cover	1
30~3	Beverage Holder (Lower)	1
30~5	Deflector Fan Grill	1
30~6	Fan Grill Anchor	2
30~7	Fan	1
30~13	Receiver, HR	1
30~14	Interface Daughter Board	1
30~15	Console Controller	1
30~16	Console Key Pad	1
30~17	2W Speaker with Wire	1
30~18	2W Speaker with Wire	1

<b>30~20</b>	Amplifier Power		1
<b>30~21</b>	Speaker Iron Net (L)		1
<b>30~22</b>	Speaker Iron Net (R)		1
<b>31</b>	1000mm Computer Cable		1
<b>32</b>	DC Power Cable (Power Input Jack)		1
<b>33</b>	Gear Motor		1
<b>34</b>	Sensor W/Cable -330mm		1
<b>35</b>	Sensor Rack		1
<b>36</b>	850mm Handpulse Assembly		2
<b>36~1</b>	Handpulse Assembly Top		2
<b>36~2</b>	Handpulse Assembly Bottom		2
<b>36~4</b>	ψ3x20 Tapping Screw		4
<b>37</b>	Adaper, 1.5 Amp		1
<b>38</b>	ψ62 x 8.2 x 36L Transportation Wheel		2
<b>39</b>	ψ78 Slide Wheel , Urethane		4
<b>40~1</b>	3/8" x 2" Thumb Head Socket Screw		4
<b>40~2</b>	35 x 10 x 10 Leveling Foot		4
<b>41</b>	Console Mast Cover		1
<b>42</b>	Chain Cover (L)		1
<b>43</b>	Chain Cover (R)		1
<b>44</b>	Round Disk Cover, Crank		2
<b>45</b>	Round Disk Cover		2
<b>46</b>	ψ38×3t×420L Handgrip Foam		2
<b>47</b>	Pedal Arm Cover (L)		1
<b>48</b>	Pedal Arm Cover (R)		1
<b>49</b>	Front Stabilizer Cover		1
<b>50</b>	Pedal (L)		1
<b>51</b>	Pedal (R)		1
<b>52</b>	Slide Wheel Cover		2
<b>53</b>	ψ32 (1.8T) Button Head End Cap		2
<b>54</b>	Front Handle Bar Cover (L)		1
<b>54~1</b>	Rear Handle Bar Cover (L)		1
<b>55</b>	Front Handle Bar Cover (R)		1
<b>55~1</b>	Rear Handle Bar Cover (R)		1
<b>56</b>	38 (2.5T) Pedal End Cover		2
<b>57</b>	Connecting Arm Cover A (R)		2
<b>57~1</b>	Connecting Arm Cover B (R)		2
<b>58</b>	Connecting Arm Cover A (L)		2
<b>58~1</b>	Connecting Arm Cover B (L)		2
<b>59</b>	5/16" x 15m/m Hex Head Screw		6
<b>60</b>	3/8" x 2-1/4" Hex Head Screw		4
<b>61</b>	3/8" x 3-3/4" Hex Head Screw		4

62	1/4" x 3/4" _Hex Head Screw		4
63	M8 x 50 _Socket Head Cap Screw		2
64	M8x30 _Socket Head Cap Screw		2
65	5/16" x 2" _Button Head Socket Screw		2
66	M5x10 _Phillips Head Screw -Plated		14
67	ψ25 _C Clip		3
68	ψ17 _C Clip		5
69	M8 x 7T _Nyloc Nut		4
70	1/4" _Nyloc Nut		4
71	5/16" x 7T _Nyloc Nut		4
72	3/8" -UNF26 x 4T _Nut		2
73	3/8" -UNF26 x 9T _Nut		2
74	3/8" x 7T _Nut		8
75	M12 _Nut		2
76	3/8" x 19 x 1.5T _Flat Washer		22
77	3/8" x 25 x 2T _Flat Washer		2
78	5/16" x 35 x 1.5T _Flat Washer		4
79	5/16" x 23 x 1.5T _Flat Washer		3
80	5/16" x 20 x 1.5T _Flat Washer		9
81	ψ25 _Wave Washer		4
82	J Bolt - M8x170mm (60mm)		1
83	ψ17 _Wave Washer		8
84	3/8" x 23 x 1.5T _Curved Washer		6
85	5x16 _Tapping Screw-plated		11
86	4x15 _Self Tapping Screw		1
87	ψ3.5x12m/m _Self Tapping Screw		28
88	4x19 _Self Tapping Screw		7
89	5x16 _Tapping Screw-plated		16
90	35 x 25.5 x 5T Bushing		1
91	5/16" x 3/4" _Hex Head Screw		4
92	ψ25x15 _Foot Pad		4
93	310mm Steel Rope (Resistance Cable)		1
94	1/4"x19 _Flat Washer		17
95	M8 x20 _Carriage Bolt		1
96	3/8" x 2T _Split Washer		2
97	3/8"×30×2T _Flat Washer		2
98~1	Drink Bottle		1
99	ψ17xψ23.5x1T _Flat Washer		1
100	5x19 _Tapping Screw		4
102	ψ26×ψ35×ψ45×10T _Isolator		2
103	3/8" x 3/4" _Hex Head Screw		4
104	5/16" x 1-1/4" _Hex Head Screw		2

<b>105</b>	M5 x 15m/m_Phillips Head Screw		18
<b>106</b>	13/14m/m_Wrench		1
<b>107</b>	Short Phillips Head Screw Driver		1
<b>108</b>	Phillips Head Screw Driver		1
<b>109</b>	12mm_Wrench		1
<b>110</b>	ψ3.5x30m/m_Self Tapping Screw		4
<b>111</b>	Aluminum Track		2
<b>112</b>	Lubricant		1
<b>113</b>	6005 Bearing for Crank Axle		6
<b>114</b>	6203 Bearing for Idler Wheel		2
<b>115</b>	M12 x P1.75_Rod-End Bearing		2
<b>116</b>	6003 Bearing for Slide Wheel		8
<b>117</b>	Rear Stabilizer Cover (A)		2
<b>117~1</b>	Rear Stabilizer Cover (B)		2
<b>129</b>	ψ38(2.0T)_Button Head End Cap		2
<b>130</b>	ψ14×ψ10×9T_Bushing - Pedal		4
<b>131</b>	ψ19×ψ14×ψ10×(5+4)T_Bushing - Pedal		8
<b>132</b>	ψ16.1×ψ31×3T_Nylon Washer		2
<b>134</b>	Threaded Bushing		2
<b>136</b>	3/8"×19_Hex Head Screw		4
<b>137</b>	M10×40mm_Hex Head Screw		4
<b>138</b>	M10×8T_Nyloc Nut		4
<b>139</b>	3/8"×7T_Nyloc Nut		4
<b>140</b>	ψ16_C Clip		2
<b>141</b>	HR Handle Cover (L)-handlebar axle cover		1
<b>142</b>	HR Handle Cover ®-handlebar axle cover		1
<b>143</b>	ψ31×ψ25.5×ψ19×16+3T_Bushing		4
<b>146</b>	Audio Cable		1
	HARDWARE KIT	004045	1
	Overlay - LCD NEW	004039	1
	Overlay - Button NEW	004042	1
	Decal (Front) NEW	004046	1
	Decal (Side) NEW	004047	2
	Upper Display	004120	1
	Lower Board	004123	1