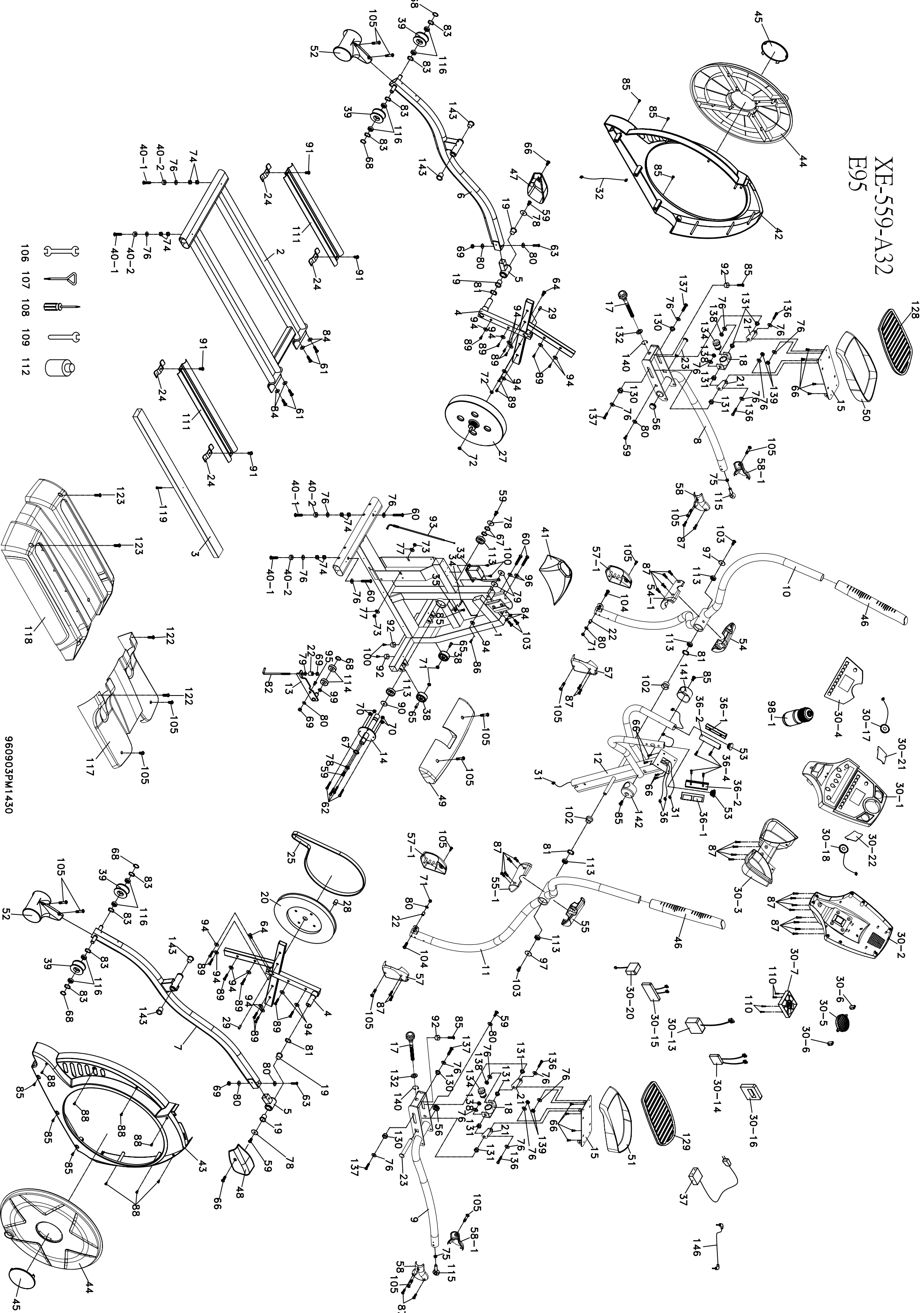


XE-559-A32 E95



- 106
- 107
- 108
- 109
- 112

960903PM1430

VE95 (595087) Part List_Sole

Parts#	Description	Qty
1	Main Frame	1
2	Rail Assembly	1
3	Rear Cover Support	1
4	Cross Bar	2
5	Bushing Housing w/IGUS bushing (Pedal Arm)	2
6	Pedal Arm Assy (L)	1
7	Pedal Arm Assy (R)	1
8	Connecting Arm Assy (L) (Full Assy including Pedal)	1
9	Connecting Arm Assy ® (Full Assy including Pedal)	1
10	Handle Bar Assy (L)	1
11	Handle Bar Assy (R)	1
12	Console Mast	1
13	Idler Wheel Assembly	1
14	Crank Axle - Drive Pulley Axle	1
15	Adjustable Pedal	2
17	Pedal Adjustment Knob	2
18	Pedal Adjustment Assembly w/threaded bushing	2
19	ψ38×ψ31×ψ25×17+3T_Copper Bushing (80% Copper)	4
20	Drive Pulley	1
21	Adjusting Plate	4
22	ψ11.9 x ψ8.5 x 16m/m_Fish-eye Sleeve	3
23	Carriage Bolt - Black	2
24	Retaining Bracket, Aluminum Track	4
25	Belt - 240J/1270J	1
27	Fly Wheel (327 x 37 x 8) (6 magnet)	1
28	Magnet	1
29	Woodruff Key	2
30	Console Assembly	1
30~1	Top Console Cover	1
30~2	Bottom Console Cover	1
30~3	Beverage Holder (Lower)	1
30~4	Face Plate Lens Cover	1
30~5	Deflector Fan Grill	1
30~6	Fan Grill Anchor	2
30~7	Fan	1
30~13	Heart Rate Receiver	1
30~14	Interface Daughter Board	1
30~15	Console Controller	1
30~16	Console Key Pad	1

30~17	2W Speaker with Wire		1
30~18	2W Speaker with Wire		1
30~20	Amplifier Power		1
30~21	Speaker Iron Net (L)		1
30~22	Speaker Iron Net (R)		1
31	1000mm_ Computer Cable-main wiring harness		1
32	DC Power Cable- 600mm power input jack		1
33	Gear Motor		1
34	300mm Sensor W/Cable		1
35	Sensor Rack		1
36	850mm Handpulse Assembly		2
36~1	Handpulse Assembly Top		2
36~2	Handpulse Assembly Bottom		2
36~4	ψ3x20_ Tapping Screw		4
37	2 Amp adaptor		1
38	ψ62_ Transportation Wheel- (62x8.2x36L)		2
39	ψ72_ Slide Wheel , Urethane		4
40~1	3/8" x 2" Thumb Head Socket Screw		4
40~2	35 x 10 x 10 Leveling Foot (Foot pad)		4
41	Console Mast Cover		1
42	Chain Cover (L)		1
43	Chain Cover (R)		1
44	Round Disk Crank Cover		2
45	Round Disk Access Cover		2
46	ψ38×3t×420L_ Handgrip Foam		2
47	Pedal Arm Cover (L)		1
48	Pedal Arm Cover (R)		1
49	Front Stabilizer Cover		1
50	Pedal (L)		1
51	Pedal (R)		1
52	Slide Wheel Cover		2
53	ψ32 (1.8T)_ Button Head End Cap		2
54	Front Handle Bar Cover (L) SET		1
54~1	Rear Handle Bar Cover (L) SET		1
55	Front Handle Bar Cover ® SET		1
55~1	Rear Handle Bar Cover ® SET		1
56	38 (2.5T) Pedal End Cover		2
57	Connecting Arm Cover A (R)		2
57~1	Connecting Arm Cover A (L)		2
58	Connecting Arm Cover B (R)		2
58~1	Connecting Arm Cover B (L)		2
59	5/16" x 15m/m_ Hex Head Screw		6

60	3/8" x 2-1/4" _Hex Head Screw		4
61	3/8" x 3-3/4" _Hex Head Screw		4
62	1/4" x 3/4" _Hex Head Screw		4
63	M8 x 50(牙長22m/m)_Socket Head Cap Screw		2
64	M8x30(耐銻3M藍膠)_Socket Head Cap Screw		2
65	5/16" x 2"(半牙)_Button Head Socket Screw		2
66	M5x10 _Phillips Head Screw -Plated		14
67	ψ25 _C Ring		3
68	ψ17 _C Ring		5
69	M8 x 7T _Nyloc Nut		4
70	1/4" _Nyloc Nut		4
71	5/16" x 7T _Nyloc Nut		4
72	3/8" -UNF26 x 4T _Nut		2
73	3/8" -UNF26 x 9T _Nut		2
74	3/8" x 7T _Nut		8
75	M12 _Nut		2
76	3/8" x 19 x 1.5T _Flat Washer		22
77	3/8" x 25 x 2T _Flat Washer		2
78	5/16" x 35 x 1.5T _Flat Washer		4
79	5/16" x 23 x 1.5T _Flat Washer		3
80	5/16" x 20 x 1.5T _Flat Washer		9
81	ψ25 _Wave Washer		4
82	J Bolt - M8x170mm (60mm)		1
83	ψ17 _Wavy Washer		8
84	3/8" x 23 x 1.5T _Curved Washer		6
85	5x16 _Tapping Screw - plated		11
86	4x15 _Self Tapping Screw		1
87	ψ3.5x12m/m _Self Tapping Screw		28
88	4x19 _Self Tapping Screw		7
89	5x16 _Tapping Screw - plated		16
90	35 x 25.5 x 5T Bushing		1
91	5/16" x 3/4" _Hex Head Screw		4
92	ψ25x15 Foot Pad		4
93	Steel Rope		1
94	1/4"x19 _Flat Washer		17
95	M8 x20 _Carriage Bolt		1
96	3/8" x 2T _Split Washer		2
97	3/8"×30×2T _Flat Washer		2
98~1	Drink Bottle		1
99	ψ17xψ23.5x1T _Flat Washer		1
100	5x19 _Tapping Screw		4
102	ψ26×ψ35×ψ45×10T _Isolator		2

103	3/8" x 3/4" _Hex Head Screw		4
104	5/16" x 1-1/4" _Hex Head Screw		2
105	M5 x 15m/m _Phillips Head Screw		16
106	13/14m/m _Wrench		1
107	Short Phillips Head Screw Driver		1
108	Phillips Head Screw Driver		1
109	12mm _Wrench		1
110	ψ3.5x30m/m _Self Tapping Screw		4
111	Aluminum Track		2
112	Lubricant		1
113	6005 Bearing, Crank Axle (Pulley Axle)		6
114	6203 Bearing for Idler Wheel - 6203		2
115	M12 x P1.75 _Rod End Bearing		2
116	6003 Bearing for Slide Wheel		8
117	Rear Stabilizer Cover (A) -short		1
118	Rear Stabilizer Cover (B) - long		1
119	1/4"×1-3/4" _Hex Head Screw		1
122	5×16mm _Tapping Screw - plated		2
123	M5×50mm _Phillips Head Screw		2
128	Pedal Foam (L)		1
129	Pedal Foam (R)		1
130	ψ14×ψ10×9T _Bushing - Pedal		4
131	ψ19×ψ14×ψ10×(5+4)T _Bushing - Pedal		8
132	ψ16.1×ψ31×3T _Nylon Washer		2
134	36.5 x 45L Threaded Bushing		2
136	3/8"×19 _Hex Head Screw		4
137	M10×40mm _Hex Head Screw		4
138	M10×8T(薄) _Nyloc Nut		4
139	3/8"×7T(薄) _Nyloc Nut		4
140	ψ16 _C Ring		2
141	HR Handle Cover (L) - HB axle cover		1
142	HR Handle Cover ® - HB axle cover		1
143	ψ31×ψ25.5×ψ19×16+3T _Bushing - Pedal Arm		4
146	400mm Audio Cable		1
	Hardware Kit	004003	1
	Decal (Side)	004076	2
	Decal (Front)	004077	1
	Chest Strap (POLAR)	004074	1
	Upper Display	004122	1
	Lower Board	004125	1