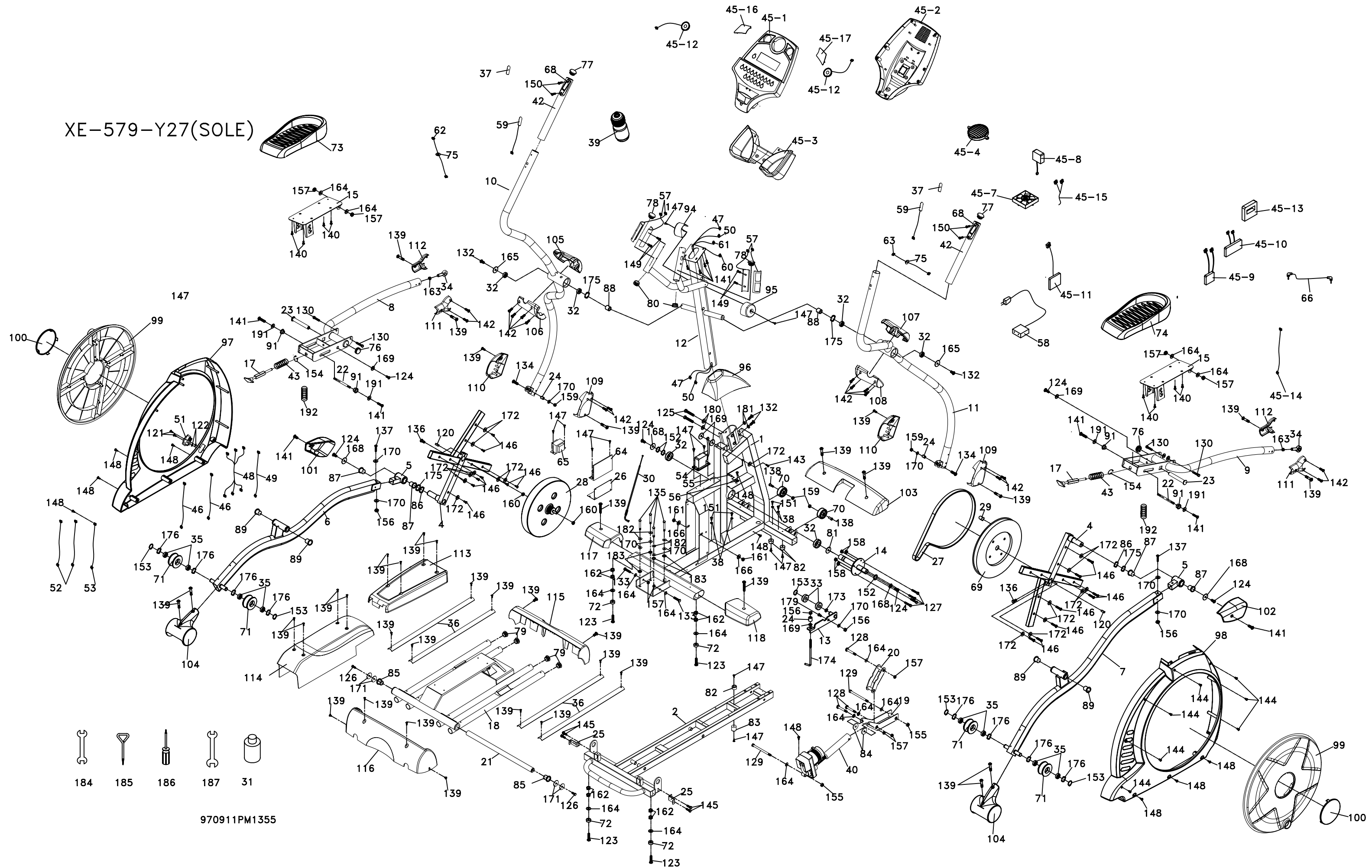


XE-579-Y27(SOLE)



970911PM1355

SOLE - WE35(535088) PARTS LIST

Dyaco #	Description	Spirit #	Qty/set
2a	Rail Frame Full Assembly (#2, #18, #40)	004301	1
4	Cross Bar	000163	2
5	Bushing Housing, Pedal Arm W/IGUS Bushing	006456	2
6	Pedal Arm Assembly (L)	004177	1
7	Pedal Arm Assembly (R)	004178	1
8	Connecting Arm Assembly (L)	004184	1
9	Connecting Arm Assembly (R)	004185	1
10	Handle Bar Assembly (L)	004166	1
11	Handle Bar Assembly (R)	004167	1
12	Console Mast Assembly	004165	1
13	Idler Wheel Assembly	000817	1
14	Crank Axle - Pulley Axle	022148	1
15	Adjustable Pedal (L & R same)	004217	2
17	Locking Pin Assembly	004212	2
18	Rail Track Assembly	004274	1
19	Incline Device	004173	1
20	Incline Motor Holder	006191	1
21	Locking Tube	006119	1
22	Axle Of Locking Pin	004213	2
23	Carriage Bolt (19 x 15 x 110L x 5/16 - Black)	000287	2
24	Ø11.9 x Ø8.5 x 16m/m_Fish-eye Sleeve	000199	3
25	Cover Holder	006190	2
26	Incline Controller Back Plate	004222	1
27	Belt (500J/1270J)	000146	1
28	Ø327x 37 x 8_Flywheel-Brake	006048	1
29	Magnet	010041	1
30	310mm_Steel Rope	000141	1
31	Lubricant	022271	1
32	6005 Bearing, Crank Axle	021951	6
33	6203 Bearing for Idler Arm	021987	2
34	Fish-eye Bearing (M12 x P1.75)	000200	2
35	6003 Bearing for Slide Wheel	010043	8
36	2.5T x Ø25L_NEW	006100	4
37	Handgrip Label (L) "Incline"	006011	1
37a	Handgrip Label @ "Level"	006243	1
38	Wire Tie Mount	010083	4
39	Drink Bottle	000844	1
40	Incline Motor (JS15-A/N30128L/115V) After SN:5350880908015037 1100mm	001146	1
42	Ø38x3Tx420L_Handgrip Foam	004190	2
43	Ø13.5x 38.5L_Spring	006145	2
45	Console Assembly 2010 SN: 5350880909016297~16800	004283	1
45-1	Top Console Cover	004225	1
45-2	Bottom Console Cover	004106	1
45-3	Beverage Holder	004041	1
45-4	Deflector Fan Grill	000983	1
45-7	Console Fan	004303	1
45-8	Receiver, HR	008070	1
45-9	Interface Daughter Board	004252	1
45-10	Console PCB Board (Upper Display)	004235	1
45-11	Rubber Key Pad (Lower Board)	004234	1
45-12	2W_Speaker W/250mm_Cable	004133	2
45-13	2W_Amplifier	004253	1
45-14	Input Jack	004254	1
45-15	300mm_Power Cord Of Amplifier	004255	1
45-16	Console Speaker Cover (L) (Speaker Iron Net)	004078	1
45-17	Console Speaker Cover @ (Speaker Iron Net)	004079	1
46	300m/m_Connecting Wire, Controller	006090	2
47	850m/m_Incline Computer Cable	004158	1
48	800m/m_Connecting Wire, Incline Motor Power Cord	001148	1
49	850m/m_Connecting Wire, Incline Motor	006092	1
50	1550m/m_Computer Cable SN: 5350880908015037 and after	004159	1
51	On/Off Switch 5A/250V Fuse #003177	002032	1
52	1C,18AWG,80mm,WHIT (Connecting Wires)	000303	2
53	1C,18AWG,200mm,GREEN/YELLOW (Ground Wire)	006093	1
54	Gear Motor	001051	1
55	400m/m_Sensor W/Cable	004186	1
56	Sensor Rack	022989	1
57	850m/m_Handpulse Assembly	008041	2
58	Power Cord	022812	1
59	Handle Switch	006012	2
60	450m/m_Handle Wire (Upper), Resistance	006089	1
61	450m/m_Handle Wire (Upper), Incline	006167	1
62	900m/m_Handle Wire (Lower), Resistance	006015	1
63	900m/m_Handle Wire (Lower), Incline	006015	1
64	Incline Controller (Alt #YJ-2000L)	004187	1
65	Incline Adaptor -(Transformer) (Alt #08007EP)	006096	1
66	400m/m_Audio Cable	004000	1
68	Handle Switch Bracket (Plastic Housing)	006070	2
69	Ø330_Drive Pulley (330 x 10)	000908	1
70	Ø62_Transportation Wheel (62 x 82 x 36L)	001019	2
71	Ø78_Sliding Wheel, Urethane	006202	4
72	Ø35 x 10 x 10_Leveling Foot	022943	4
73	Pedal (L)	000539	1
74	Pedal (R)	000848	1
75	Console Grommet	006081	2
76	Ø38 (2.5T)_Pedal End Cover	004049	2
77	Ø38(2.0T)_Button Head End Cap	022024	2
78	Ø32 (1.8T)_Button Head End Cap	022069	2
79	Ø32 (2.5T)_Round End Cap	000841	4
80	Ø32 (2.0T)_Round End Cap	004200	2
81	Ø35xØ25.5x5T_Bushing	000148	1
82	Ø25x15L_Foot Pad	010124	3
83	Ø25x25L_Foot Pad	006161	1
84	Ø3/8" xØ35 x5T_Nylon Washer	006201	2
85	Ø38 xØ34 xØ 26 x 4+16T_Bushing	006069	2
86	Ø25.5xØ33.5x1.5T_Nylon Wave Washer	006242	2
87	IGUS Bushing	004202	4
88	Ø45 x Ø35 xØ 26x 10T_Isolator	000291	2
89	Ø31xØ25.5xØ19x16+3T_Pedal Bushing	022699	4
91	Ø19xØ14xØ10x(5+4)T_Bushing	004031	4
94	HandPulse Bar End Cap(L)-Handle Bar Axle Cover	004016	1
95	HandPulse Bar End Cap@-Handle Bar Axle Cover	004017	1
96	Console Mast Cover	000819	1
97	Chain Cover (L)	004164	1
98	Chain Cover (R)	000802	1
99	Round Disk	000175	2
100	Round Disk Access Cover	000700	2
101	Pedal Arm Cover (L)	000541	1
102	Pedal Arm Cover (R)	000543	1
103	Front Stabilizer Cover	004015	1
104	Slide Wheel Cover	004023	2
105 & 106	Front Handle Bar Cover (L)	004069	1
107 & 108	Front Handle Bar Cover (R)	004070	1
109 & 110	Connecting Arm Cover A (R)	004028	2
111 & 112	Connecting Arm Cover B (R)	004030	2
113	Incline Bottom Cover	004137	1
114	Incline Cover	004139	1
115	Rear Bar Cover	004136	1
116	Inclineable Rail Cover	004135	1
117	Middle Stabilizer Cover (L)	004140	1
118	Middle Stabilizer Cover (R)	004141	1
120	7x7x25_Woodruff Key	001076	2
121	M4x12m/m_Phillips Head Screw	000070	2
122	M4x5T_Nyloc Nut	030031	2
123	3/8" x 2" Thumb Head Socket Screw	022885	4
124	5/16" x 15m/m_Hex Head Screw	022803	6
125	3/8" x 2-1/4" Hex Head Screw	020623	2
126	5/16" x 19m/m_Hex Head Screw	006240	2
127	1/4" x 3/4" Hex Head Screw	030097	4
128	3/8" x 2-1/2" Hex Head Screw	004227	3
129	M10x130m/m_Hex Head Screw	004198	2
130	3/8" x 19_Hex Head Screw	000060	4
132	3/8" x 3/4" Hex Head Screw (Plated)	004219	4
133	3/8" x 1-1/2" Hex Head Screw	000062	2
134	5/16" x 1-1/4" Hex Head Screw	022763	2
135	5/16" x 2-1/4" Hex Head Screw	007186	4
136	M8x30_Socket Head Cap Screw	010087	2
137	M8 x 50_Socket Head Cap Screw	022139	2
138	5/16" x1- 3/4" Button Head Socket Screw	000126	2
139	M5 x 15m/m_Phillips Head Screw	000913	38
140	M5x10m/m_Phillips Head Screw (Plated)	000051	8
141	M5x10m/m_Phillips Head Screw (Plated)	000051	10
142	Ø3.5x12_Self Tapping Screw	010113	16
143	4x15_Self Tapping Screw	030054	1
144	4x19_Self Tapping Screw	030065	7
145	M6x10m/m_Phillips Head Screw	000054	4
146	M5x16_Tapping Screw (Plated)	008169	16
147	M5x19_Tapping Screw (Plated)	030057	12
148	M5x16_Self Tapping Screw (Plated)	010150	9
149	Ø3x20_Tapping Screw	000839	4
150	M5x20_Flat Head Socket Screw	006105	4
151	Ø3.5x16_Flat Head Socket Screw	022979	4
152	Ø25_C Ring	000195	3
153	Ø17_C Ring	000196	5
154	Ø10_C Ring	004001	2
155	M10 x 8T_Nyloc Nut	006147	2
156	M8 x 7T_Nyloc Nut (plated)	022288	4
157	3/8" x 7T_Nyloc Nut	010108	9
158	1/4" Nyloc Nut	030098	4
159	5/16" x 7T_Nyloc Nut	000081	4
160	3/8" -UNF26 x 4T_Nut	010094	2
161	3/8" -UNF26 x 9T_Nut	010095	2
162	3/8" x 7T_Nut	010108	8
163	M12_Nut	022794	2
164	3/8" x 19 x 1.5T_Flat Washer	000076	15
165	3/8" x 30 x 2.0T_Flat Washer	006045	2
166	3/8" x 25 x 2T_Flat Washer	010098	2
167	3/8"x15x1T_Flat Washer	006160	1
168	5/16" x 35 x 1.5T_Flat Washer	010099	4
169	5/16" x 23 x 1.5T_Flat Washer	022908	5
170	5/16"x20x1.5T_Flat Washer	022918	11
171	5/16"x35x2.0T_Flat Washer	006241	4
172	1/4"x19_Flat Washer	022919	17
173	Ø17x 23.5 x 1T_Flat Washer	022975	1
174	M8x170m/m_J Bolt (60mm)	010142	1
175	Ø25_Wave Washer	022698	2
176	Ø17_Wave Washer	022700	8
179	M8 x20_Carriage Bolt	030094	1
180	3/8" x 2T_Split Washer	000053	2
181	3/8" x 23 x 2T_Curved Washer	030081	2
182	Ø5/16"x1.5T_Split Washer	020032	4
183	Ø5/16" Raised Washer	007185	4
184	13/14m/m_Wrench	022596	1
185	Short Phillips Head Screw Driver	023109	1
186	Phillips Head Screw Driver	023091	1
187	12/14m/m_Wrench	030096	2
191	5/16"x20x1.5T_Flat Washer	022918	4
	Keypad Overlay	004289	1
	Hardware Kit	004195	1
	Console Overlay	004287	1
	Feeder Wire Only	004204	1
	Chest Strap	022945	1