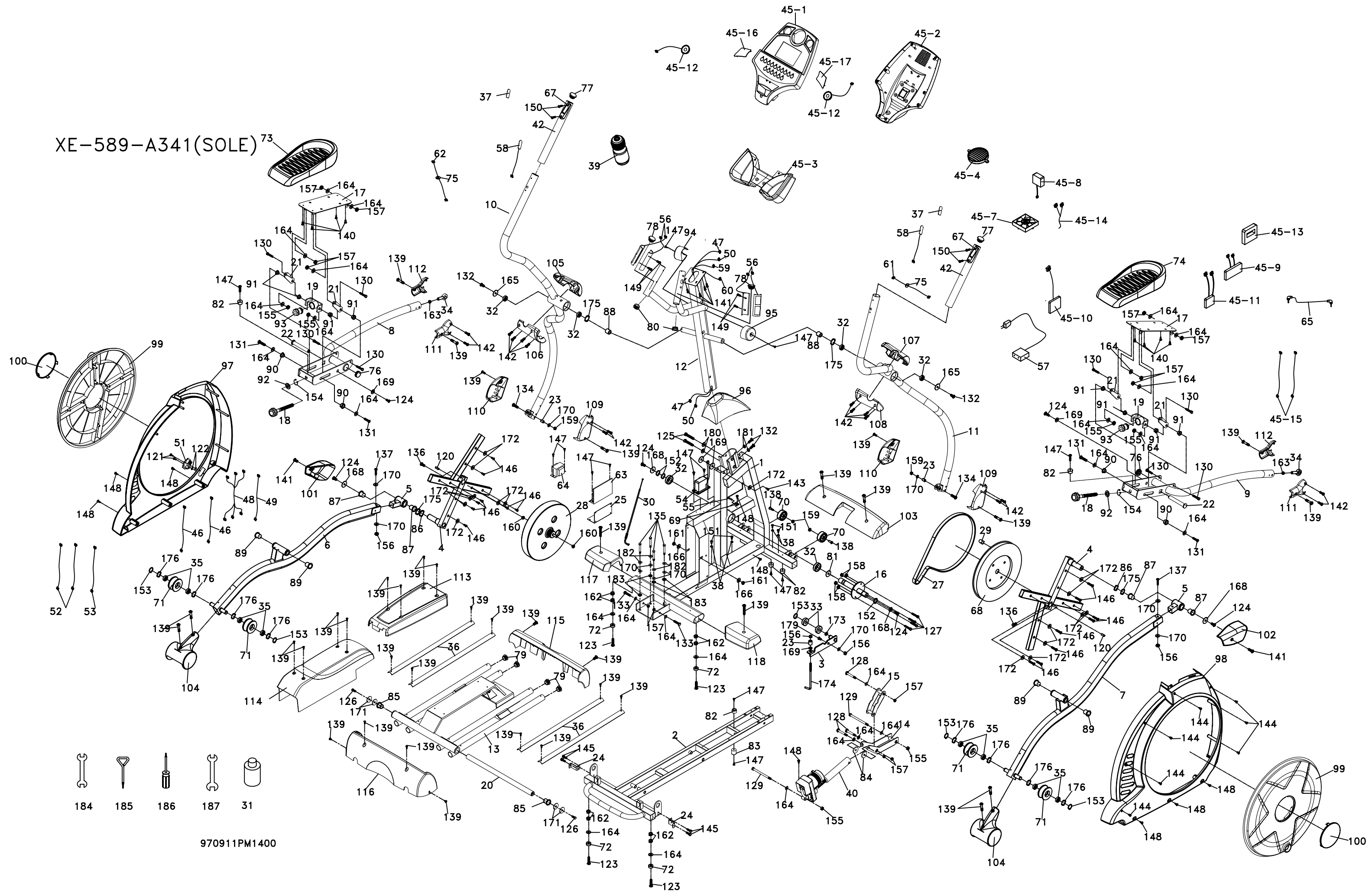


XE-589-A341(SOLE)



- 184
- 185
- 186
- 187
- 31

970911PM1400

WE55(555088) 2010 PARTS LIST

Dyaco Part#	Description	Part #	Qty/set
2a	Rail Frame Full Assembly	004301	1
3	Idler Wheel Assembly w/Bearing	000817	1
4	Cross Bar	000163	2
5	Bushing Housing, Pedal Arm w/IGUS Bushing	006456	2
6	Pedal Arm (L) - Full Assembly	004177	1
7	Pedal Arm (R) - Full Assembly	004178	1
8	Connecting Arm (L) - Full Assembly w/Pedal	004085	1
9	Connecting Arm (R) - Full Assembly w/Pedal	004086	1
10	Handle Bar (L) - Full Assembly	004166	1
11	Handle Bar (R) - Full Assembly	004167	1
12	Console Mast Assembly	004165	1
13	Rail Assembly	004274	1
14	Incline Device	004173	1
15	Incline Motor Holder	006191	1
16	Drive Pulley Axle	022148	1
17	Adjustable Pedal	004061	2
18	Pedal Adjustment Knob Assembly	004048	2
19	Pedal Adjustment Assembly w/threaded bushing	004056	2
20	Locking Tube	006119	1
21	Adjusting Plate	004067	4
22	Carriage Bolt (19 x 15 x 110L x 5/16 - Black)	000287	2
23	ψ11.9 x ψ8.5 x 16m/m_Fish-eye Sleeve	000199	3
24	Cover Holder	006190	2
25	Incline Controller Back Plate	004222	1
27	Belt (500J/1270J)	000146	1
28	Flywheel-Brake (327x37x8) 6-magnet	006048	1
29	Magnet	010041	1
30	Steel Rope (310mm)	004205	1
31	Lubricant	022271	1
32	6005_Bearing, Crank Axle	021951	6
33	6203_Bearing for Idler Arm	021987	2
34	M12 x P1.75_Fish-eye Bearing	000200	2
35	6003_Bearing for Slide Wheel	010043	8
36	Incline Rail (2.5T x 625L)	006100	4
37	Handgrip Label (L) "Incline"	006011	1
37a	Handgrip Label (R) "Level"	006243	1
38	Wire Tie Mount	010083	4
39	Drink Bottle	000844	1
40	Incline Motor - One Harness SN:5550880908003025 and after	001146	1
42	ψ38x3Tx420L_Handgrip Foam	004190	2
45	Console Assembly 2010 SN: 5550880910003907-4242	004284	1
45-1	Top Console Cover	004080	1
45-2	Bottom Console Cover	004106	1
45-3	Beverage Holder (Lower)	004041	1
45-4	Deflector Fan Grill	000983	1
45-7	Console Fan	004303	1
45-8	Heart Rate Receiver	022804	1
45-9	Interface Daughter Board	004258	1
45-10	Console Display Board	004231	1
45-11	Console Lower Board	004232	1
45-12	4Ω/2W+25cm_Speaker W/Cable	004133	2
45-13	2W_Amplifier	004259	1
45-14	Power Cord Of Amplifier	004260	1
45-15	270m/m_Earphone W/Cable	004261	2
45-16	Speaker Iron Net (L)	004078	1
45-17	Speaker Iron Net (R)	004079	1
46	Connecting Wire, Controller	006090	2
47	Incline Computer Cable	006068	1
48	Connecting Wire, Incline Motor Power Cord SN:5550880908003025 and after	001148	1
49	Connecting Wire, Incline Motor	006092	1
50	1550mm_Computer Cable SN:5550880908003025 and after	004159	1
51	On/Off Switch	002032	1
51a	Fuse for On/Off Switch (5A/250V)	003177	1
52	80mm,WHIT_Connecting Wires	000303	2
53	200mm,GREEN/YELLOW_Ground Wire	006093	1
54	Gear Motor	022170	1
55	300mm_Sensor W/Cable	000184	1
56	850mm_Handpulse Wire	008041	2
57	Power Cord	022812	1
58	Handle Switch	006012	2
59	450mm_Handle Wire (Upper), Resistance	006089	1
60	450mm_Handle Wire (Upper), Incline	006167	1
61	900mm_Handle Wire (Lower), Resistance	006015	1
62	900mm_Handle Wire (Lower), Incline	006015	1
63	Incline Controller	006095	1
64	Incline Adaptor (Transformer)	006096	1
65	Audio Cable	004000	1
67	Handle Switch Bracket (Plastic Housing)	006070	2
68	Drive Pulley (330x10)	000908	1
69	Sensor Rack	022989	1
70	ψ62_Transportation Wheel (62x8.2x36L)	001019	2
71	ψ78_Sliding Wheel_Urethane	006202	4
72	ψ35x10_Leveling Foot	022943	4
73	Pedal (L)	000539	1
74	Pedal (R)	000848	1
75	Console Grommet	006081	2
76	ψ38 (2.5T)_Pedal End Cover	004049	2
77	ψ38(2.0T)_Button Head End Cap	022024	2
78	ψ32 (1.8T)_Button Head End Cap	022069	2
79	ψ32 (2.5T)_Round End Cap	000841	4
80	ψ32 (2.0T)_Round End Cap	004200	2
81	ψ35xψ25.5x5T_Bushing	000148	1
82	ψ25x15_Foot Pad	010124	5
83	ψ25x25L_Foot Pad	006161	1
84	ψ3/8" xψ35 x5T_Nylon Washer	006201	2
85	ψ38 xψ34 xψ 26 x 4+16T_Bushing	006069	2
86	ψ25.5xψ33.5x1.5T_Nylon Wave Washer	006242	2
87	WFM-2528-21_Bushing (IGUS Bushing)	004202	4
88	ψ45 x ψ35 xψ 26x 10T_Isolator	000291	2
89	ψ31xψ25.5xψ19x16+3T_Bushing	022699	4
90	ψ14xψ10x9T_Bushing - Pedal Bushing	004031	4
91	ψ19xψ14xψ10x(5+4)T_Bushing - Pedal Bushing	004033	8
92	ψ16.1xψ31x3T_Nylon Washer	023216	2
93	Threaded Bushing	006037	2
94	Handpulse Bar End Cap (L)	004016	1
95	Handpulse Bar End Cap (R)	004017	1
96	Console Mast Cover	000819	1
97	Chain Cover (L)	004164	1
98	Chain Cover (R)	000802	1
99	Round Disk	000175	2
100	Round Disk Access Cover	000700	2
101	Pedal Arm Cover (L)	000541	1
102	Pedal Arm Cover (R)	000543	1
103	Front Stabilizer Cover	004015	1
104	Slide Wheel Cover	004023	2
105 & 106	Front Handle Bar Cover (L) SET	004069	1
107 & 108	Front Handle Bar Cover ® SET	004070	1
109 & 110	Connecting Arm Cover A ® SET	004028	2
111 & 112	Connecting Arm Cover B ® SET	004030	2
113	Incline Bottom Cover	004137	1
114	Incline Cover	004139	1
115	Rear Bar Cover	004136	1
116	Inclineable Rail Cover	004135	1
117	Middle Stabilizer Cover (L)	004140	1
118	Middle Stabilizer Cover (R)	004141	1
120	7x7x25_Woodruff Key	001076	2
121	M4x12mm_Phillips Head Screw	000070	2
122	M4x5T_Nyloc Nut	030031	2
123	3/8" x 2" _Thumb Head Socket Screw	022885	4
124	5/16" x 15m/m_Hex Head Screw	022803	6
125	3/8" x 2-1/4" _Hex Head Screw	020623	2
126	5/16" x 19m/m_Hex Head Screw	006240	2
127	1/4" x 3/4" _Hex Head Screw	030097	4
128	3/8" x 2-1/2" _Hex Head Screw	004227	3
129	M10x130m/m_Hex Head Screw	004198	2
130	3/8" x 19_Hex Head Screw	000060	8
131	M10 x 40 m/m_Hex Head Screw	004063	4
132	3/8" x 3/4" _Hex Head Screw	004219	4
133	3/8" x 1-1/2" _Hex Head Screw	004262	2
134	5/16" x 1-1/4" _Hex Head Screw	022763	2
135	5/16" x 2-1/4" _Hex Head Screw	007186	4
136	M8x30_Socket Head Cap Screw	010087	2
137	M8 x 50_Socket Head Cap Screw	022139	2
138	5/16" x1- 3/4" _Button Head Socket Screw (Plated)	000126	2
139	M5 x 15m/m_Phillips Head Screw	000913	38
140	M5x10m/m_Phillips Head Screw (Plated)	000051	8
141	M5x10m/m_Phillips Head Screw (Plated)	000051	6
142	ψ3.5x12_Self Tapping Screw	010113	16
143	4x15_Self Tapping Screw	030054	1
144	4x19_Self Tapping Screw	030065	7
145	M6x10m/m_Phillips Head Screw	000054	4
146	M5x16_Tapping Screw (Plated)	008169	16
147	M5x19_Tapping Screw (Plated)	030057	14
148	M5x16_Self Tapping Screw (Plated)	010150	9
149	ψ3x20_Tapping Screw	000839	4
150	M5x20_Flat Head Socket Screw	006105	4
151	ψ3.5x16_Tapping Screw	022979	4
152	ψ25_C Ring	000195	3
153	ψ17_C Ring	000196	5
154	ψ16_C Ring (For Pull Pin)	004034	2
155	M10 x 8T_Nyloc Nut	006147	6
156	M8 x 7T_Nyloc Nut	022288	4
157	3/8" x 7T_Nyloc Nut	000080	13
158	1/4" _Nyloc Nut	030098	4
159	5/16" x 7T_Nyloc Nut	000081	4
160	3/8" -UNF26 x 4T_Nut	010094	2
161	3/8" -UNF26 x 9T_Nut	010095	2
162	3/8" x 7T_Nut	010108	8
163	M12_Nut	022794	2
164	3/8" x 19 x 1.5T_Flat Washer	000076	27
165	3/8" x 30 x 2.0T_Flat Washer	006045	2
166	3/8" x 25 x 2T_Flat Washer	010098	2
167	3/8"x15x1T_Flat Washer	006160	1
168	5/16" x 35 x 1.5T_Flat Washer	010099	4
169	5/16" x 23 x 1.5T_Flat Washer	022908	5
170	5/16"x20x1.5T_Flat Washer	022918	11
171	5/16"x35x2.0T_Flat Washer	006241	4
172	1/4"x19_Flat Washer	022919	17
173	ψ17x 23.5 x 1T_Flat Washer	022975	1
174	J Bolt	010142	1
175	ψ25_Wave Washer	022698	2
176	ψ17_Wave Washer	022700	8
179	M8 x20_Carriage Bolt	030094	1
180	3/8" x 2T_Split Washer	000053	2
181	3/8" x 23 x 2T_Curved Washer	030081	2
182	ψ5/16"x1.5T_Split Washer	020032	4
183	ψ5/16" _Raised Washer	007185	4
184	13/14m/m_Wrench	022596	1
185	Short Phillips Head Screw Driver	023109	1
186	Phillips Head Screw Driver	023091	1
187	12/14m/m_Wrench	030036	1
	Console Overlay	004290	1
	Keypad Overlay	004291	1
	Hardware Kit	004193	1
	Feeder Wire Only	004204	1
	Console Poly Sticker	004300	1
	Chest Strap	022675	1

SN: 5550880908003025 and after