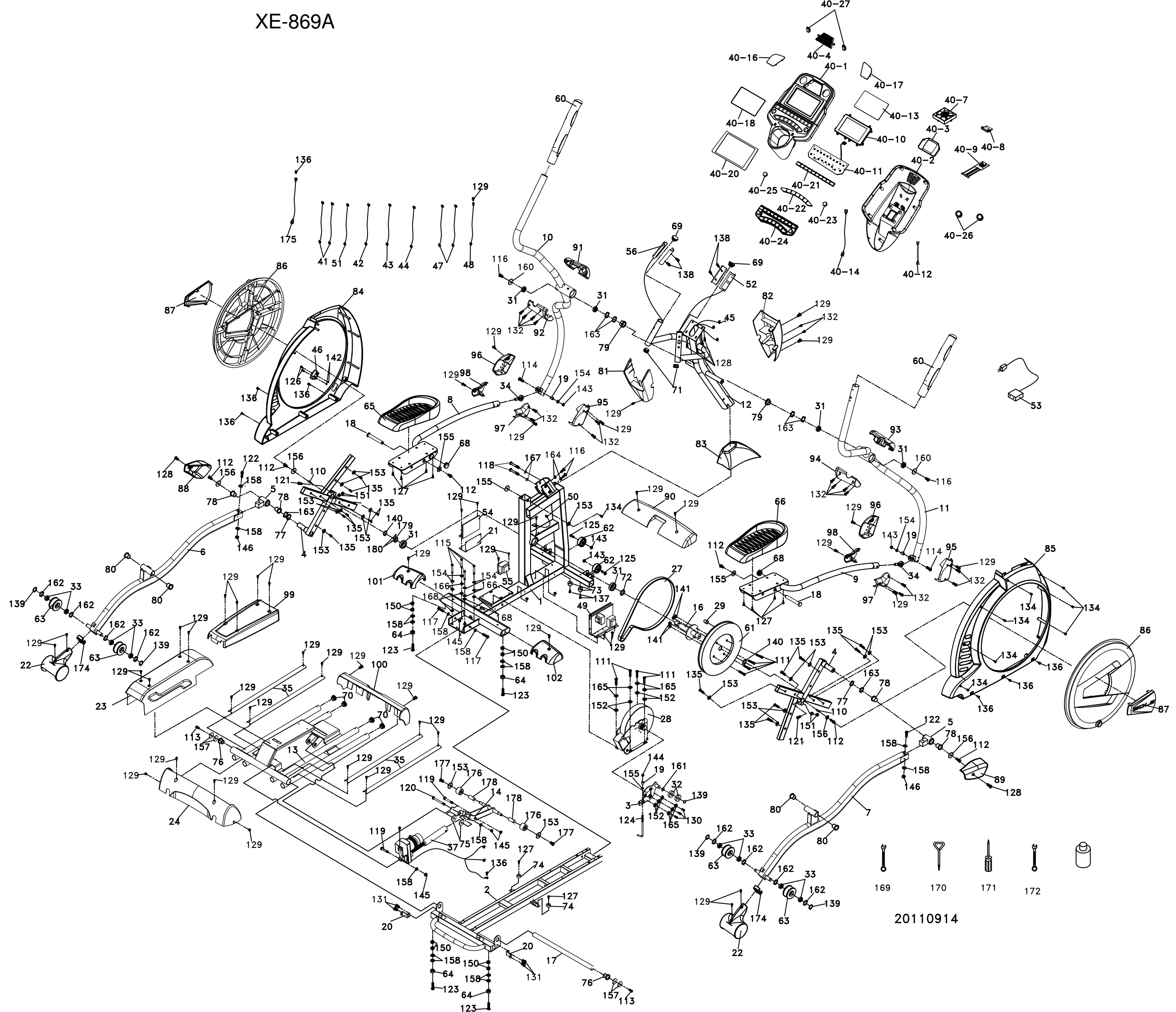


XE-869A



20110914

SOLE - E98 - 598010 - PARTS LIST

| Dyaco# | Material # | Detailed Descriptions | QTY |
|--------|---------------|----------------------------------|-----|
| 1 | BB010020-Q2 | Main Frame | 1 |
| 2 | RBB030024-Q2 | Rear Rail Assembly | 1 |
| 3 | BB070010-Q2 | Idler Bracket | 1 |
| 4 | BB040011-Q2 | Cross Bar | 2 |
| 5 | BB070056-Z1 | Bushing Housing, Pedal Arm | 2 |
| 6 | RBB050086-Q2 | Pedal Arm (L) | 1 |
| 7 | RBB050087-Q2 | Pedal Arm (R) | 1 |
| 8 | RBB050019A-Q2 | Connecting Arm (L) | 1 |
| 9 | RBB050020A-Q2 | Connecting Arm (R) | 1 |
| 10 | RBB060061-Q2 | Swing Arm (L) | 1 |
| 11 | RBB060062-Q2 | Swing Arm (R) | 1 |
| 12 | RBB020035A-Q2 | Console Mast | 1 |
| 14 | RBB070076-Q2 | Incline Device | 1 |
| 16 | C140017 | Crank Axle | 1 |
| 17 | BB070023 | Locking Tube Assembly | 1 |
| 18 | C050035-Z3 | Carriage Bolt | 2 |
| 19 | C080008-Z1 | Rod End Sleeve | 3 |
| 20 | B130063-Q2 | Cover Holder(B) | 2 |
| 21 | B060015-Q2 | Controller Fixing Plate | 1 |
| 22 | B140004-Q2 | Slide Wheel Cover | 2 |
| 23 | B140005-Q2 | Incline Cover | 1 |
| 24 | B140006-Q2 | Rear Bar Cover | 1 |
| 27 | N010002 | Drive Belt | 1 |
| 28 | K500030 | Induction Brake | 1 |
| 29 | N040002 | Magnet | 1 |
| 31 | K056005-A1 | 6005_Bearing | 6 |
| 32 | K056203-A1 | 6203_Bearing | 2 |
| 33 | K056003-A1 | 6003_Bearing | 8 |
| 34 | K056001-A4 | M12 × P1.75_Rod End Bearing | 2 |
| 35 | M030003-Z9 | Aluminum Rail | 4 |
| 37 | G110046 | Incline Motor | 1 |
| 40 | RZ5YE210-20 | Console Assembly | 1 |
| 40~1 | P020265A-JQ | Console Top Cover | 1 |
| 40~2 | P020266-A1 | Console Bottom Cover | 1 |
| 40~3 | P250002-A1 | Fan Grill Anchor | 1 |
| 40~4 | P250001-A1 | Deflector Fan Grill | 1 |
| 40~7 | F040004 | Fan Assembly | 1 |
| 40~8 | F090108 | HR monitor module | 1 |
| 40~9 | D022144 | Interface Board | 1 |
| 40~10 | D022146 | Console Display Board | 1 |
| 40~11 | D022147 | Main Key Board | 1 |
| 40~12 | E030049 | 300m/m_HR monitor module W/Cable | 1 |
| 40~13 | P020256 | LCD Transparent Piece | 1 |
| 40~14 | E040021 | 200m/m_Ground Wire | 1 |

| | | | |
|-------|---------------|---|---|
| 40~16 | B130091-Z3 | Speaker Iron Net (L) | 1 |
| 40~17 | B130092-Z3 | Speaker Iron Net (R) | 1 |
| 40~18 | P060424 | 9" Water-resist Rubber | 1 |
| 40~20 | P020271 | Face Plate Lens Cover | 1 |
| 40~21 | P170044-AC-BD | Fuention Key | 1 |
| 40~22 | P170045-AC-BA | Switch Key | 1 |
| 40~23 | P170046-AC-BB | FAN Key | 1 |
| 40~24 | P060441-A1 | Key Water-resist Rubber | 1 |
| 40~25 | P170046-AC-BC | DISPLAY Key | 1 |
| 40~26 | P280021-A1 | Audio Cable End Cap | 2 |
| 40~27 | P060060-A1 | Fan Grill Anchor | 2 |
| 41 | E010061 | 300m/m_Connecting Wire, Controller | 2 |
| 42 | E020255 | 700m/m_Computer Cable | 1 |
| 43 | E011018 | 900m/m_Connecing Wire, Incline Motor Power Cord | 1 |
| 44 | E021001 | 850m/m_Connecting Wire, Incline Motor | 1 |
| 45 | E020331 | 1550m/mComputer Cable | 1 |
| 46 | F030053 | AC Electronic Module | 1 |
| 47 | E010081 | 80m/m_Connecting Wire (White) | 2 |
| 48 | E040007 | 200m/m_Ground Wire | 1 |
| 49 | F090354 | Generator/Brake Controller | 1 |
| 50 | F030193 | 500m/m_Sensor W/Cable | 1 |
| 51 | E011002 | 1000m/m_Wire Brake Coil Harness | 1 |
| 52 | F090204 | 850m/m_Handpulse W/Cable Assembly | 1 |
| 53 | E060001 | Power Cord | 1 |
| 54 | D020609 | Incline Controller | 1 |
| 55 | D022148 | Incline Adaptor | 1 |
| 56 | F090225 | 850m/m_Handpulse W/Cable Assembly(Red) | 1 |
| 60 | P210001-A1 | TPR Handle Bar Axle Inner Cover | 2 |
| 61 | P060090-A1 | Drive Pulley | 1 |
| 62 | P050015-A1 | Transportation Wheel | 2 |
| 63 | P050030 | Ø72_Slide Wheel , Urethane | 4 |
| 64 | P060256-A1 | Rubber Foot | 4 |
| 65 | P060047-A1 | Pedal (L) | 1 |
| 66 | P060170-A1 | Pedal (R) | 1 |
| 68 | P040035-A1 | Pedal End Cover | 2 |
| 69 | P060253-A1 | Ø32(1.8T)_Button Head Plug | 2 |
| 70 | P040050-A1 | 32 × 2.5T_Round Cap | 4 |
| 71 | P040052-A1 | 32 × 1.8T_Round Cap | 2 |
| 72 | P060273-A1 | 35 × 25.5 × 5T_Spacer Bushing | 1 |
| 73 | P060252-A1 | Ø25 × Ø25 × 15T_Rubber Foot Pad | 2 |
| 74 | P060264-A1 | 26.5 × 6 × 10T_Rubber Foot Pad | 2 |
| 75 | P060277 | 3/8 × 35 × 5T_Nylon Washer | 2 |
| 76 | P060029-A1 | Ø38 × Ø34 × Ø26 × 4+16T_Bushing | 2 |
| 77 | P060377 | Ø25.5 × 33.5 × 1.5T_Nylon Wave Washer | 2 |
| 78 | P270034 | ZFM-2528-21_Bushing | 4 |
| 79 | P060271-A1 | Ø45 × Ø35 × Ø26 × 10T_Isolator | 2 |
| 80 | P270033 | JFM-1922-16_Bushing | 4 |
| 81 | P180077-A1 | Console Chin Cover (Front) | 1 |

| | | | |
|-----|---------------|-------------------------------------|----|
| 82 | P180078-A1 | Console Chin Cover (Rear) | 1 |
| 83 | RP100068-A1 | Console Mast Cover | 1 |
| 84 | RP100066AD-A1 | Side Case (L) | 1 |
| 85 | RP100067D-A1 | Side Case (R) | 1 |
| 86 | P110012-I5 | Round Disk | 2 |
| 87 | P110013-LI | Round Disk Cover | 2 |
| 88 | P060080-A1 | Pedal Arm Cover (L) | 1 |
| 89 | P060163-A1 | Pedal Arm Cover (R) | 1 |
| 90 | P190001-A1 | Front Stabilizer Cover | 1 |
| 91 | P180007-A1 | Front Handle Bar Cover (L) | 1 |
| 92 | P180008-A1 | Rear Handle Bar Cover (L) | 1 |
| 93 | P180009-A1 | Front Handle Bar Cover (R) | 1 |
| 94 | P180010-A1 | Rear Handle Bar Cover (R) | 1 |
| 95 | P180001-A1 | Connecting Arm Cover A (R) | 2 |
| 96 | P180002-A1 | Connecting Arm Cover A (L) | 2 |
| 97 | P180003-A1 | Connecting Arm Cover B (R) | 2 |
| 98 | P180004-A1 | Connecting Arm Cover B (L) | 2 |
| 99 | P190009-A1 | Incline Bottom Cover | 1 |
| 100 | P190027-A1 | Inclinable Rail Cover | 1 |
| 101 | P190006-A1 | Middle Stabilizer Cover (L) | 1 |
| 102 | P190007-A1 | Middle Stabilizer Cover (R) | 1 |
| 110 | J320002-Z1 | 7 × 7 × 25m/m_Woodruff Key | 2 |
| 111 | J010002-ZZ | 1/4" × 3/4" _Hex Head Bolt | 8 |
| 112 | J010503-ZR | 5/16" × 15m/m _Hex Head Bolt | 6 |
| 113 | J010504-Z9 | 5/16" × 1" _Hex Head Bolt | 2 |
| 114 | J010505-Z1 | 5/16" × 1-1/4" _Hex Head Bolt | 2 |
| 115 | J010509-Z1 | 5/16" × 2-1/4" _Hex Head Bolt | 4 |
| 116 | J011002-Z9 | 3/8" × 3/4" _Hex Head Bolt | 4 |
| 117 | J011006-Z1 | 3/8" × 1-1/2" _Hex Head Bolt | 2 |
| 118 | J011009-Z1 | 3/8" × 2-1/4" _Hex Head Bolt | 2 |
| 119 | J011010A-ZS | 3/8" × 2-1/2" _Hex Head Bolt | 2 |
| 120 | J011006A-YD | 3/8" × 1-1/2" _Hex Head Bolt | 1 |
| 121 | J033008G-Z4 | M8 × 40m/m _Socket Head Cap Bolt | 2 |
| 122 | J031009D-Z4 | 3/8" × 2-1/4" _Socket Head Cap Bolt | 2 |
| 123 | J341008-Z1 | 3/8" × 2" _Flat Head Socket Bolt | 4 |
| 124 | J083012-Z1 | M8 × 170m/m _J Bolt | 1 |
| 125 | J020508A-Z1 | 5/16" × 2" _Button Head Socket Bolt | 2 |
| 126 | J094502-Z1 | M4 × 12m/m _Phillips Head Screw | 2 |
| 127 | J092001-Z9 | M5 × 10m/m _Phillips Head Screw | 10 |
| 128 | J092001-Z1 | M5 × 10m/m _Phillips Head Screw | 6 |
| 129 | J092003-Z1 | M5 × 15m/m _Phillips Head Screw | 49 |
| 130 | J092503-Z1 | M6 × 15m/m _Phillips Head Screw | 3 |
| 131 | J352501-Z1 | M6 × 10m/m _Phillips Head Screw | 4 |
| 132 | J396804-Z1 | Ø3.5 × 12m/m _Sheet Metal Screw | 18 |
| 134 | J396805-Z1 | Ø3.5 × 16m/m _Sheet Metal Screw | 8 |
| 135 | J377105-Z1 | 5 × 16m/m _Tapping Screw | 14 |
| 136 | J367105-Z1 | 5 × 16m/m _Tapping Screw | 8 |
| 137 | J367114-Z1 | 5 × 19m/m _Tapping Screw | 2 |

| | | | |
|-----|-------------|-------------------------------------|----|
| 138 | J517007-Z1 | Ø3 × 20m/m_Tapping Screw | 4 |
| 139 | J310002-Z4 | Ø17_C Ring | 5 |
| 140 | J310001-Z4 | Ø25_C Ring | 2 |
| 141 | J139461-Z1 | 1/4" _Nyloc Nut | 4 |
| 142 | J139411-Z1 | M4 × 5T _Nyloc Nut | 2 |
| 143 | J139062F-Z1 | 5/16" × 7T _Nyloc Nut | 4 |
| 144 | J139261-ZF | M8 × 7T _Nyloc Nut | 1 |
| 145 | J139011-Z1 | 3/8" × 7T _Nyloc Nut | 5 |
| 146 | J139012-Z7 | 3/8" × 11T _Nyloc Nut | 2 |
| 150 | J129021-Z1 | 3/8" × 7T _Nut | 8 |
| 151 | J129272-YB | M8 × 6.3T _Nut | 4 |
| 152 | J210016-Z1 | 1/4" × 13 × 1T _Flat Washer | 7 |
| 153 | J210017-Z1 | 1/4" × 19 × 1.5T _Flat Washer | 17 |
| 154 | J210010-Z1 | 5/16" × 20 × 1.5T _Flat Washer | 6 |
| 155 | J210009-Z1 | 5/16" × 23 × 1.5T _Flat Washer | 4 |
| 156 | J210001-Z1 | 5/16" × 35 × 1.5T _Flat Washer | 4 |
| 157 | J210014-Z1 | 5/16" × 35 × 2.0T _Flat Washer | 4 |
| 158 | J210003-Z1 | 3/8" × 19 × 1.5T _Flat Washer | 16 |
| 160 | J210022-Z1 | 3/8" × 30 × 2.0T _Flat Washer | 2 |
| 161 | J210011-Z1 | Ø17 × 23.5 × 1T _Flat Washer | 1 |
| 162 | J250002-Z4 | Ø17 _Wave Washer | 8 |
| 163 | J250001-Z4 | Ø25 _Wave Washer | 6 |
| 164 | J220004-Z1 | 3/8" × 23 × 2T _Curved Washer | 2 |
| 165 | J260006-Z1 | 1/4" _Split Washer | 7 |
| 166 | J260007-Z1 | Ø5/16" × 1.5T _Split Washer | 4 |
| 167 | J260003-Z1 | 3/8" × 2T _Split Washer | 2 |
| 168 | J270002-Z1 | Ø5/16" _Star Washer | 4 |
| 169 | J330025-Z1 | 13/14m/m _Wrench (160m/m) | 1 |
| 170 | J330007-Z1 | Short Phillips Head Screw Driver | 1 |
| 171 | J330008-Z1 | Phillips Head Screw Driver | 1 |
| 172 | J330026-Z1 | 12/14m/m _Wrench (160m/m) | 1 |
| 174 | P040011-A1 | Oval End Cap | 2 |
| 175 | E040022 | 1400m/m _Ground Wire | 1 |
| 176 | P050038-A1 | Incline Transportation Wheel | 2 |
| 177 | J562501-Z9 | M6 × 10m/m _Thumb Head Socket Screw | 2 |
| 178 | P060568-A1 | PVC Bushing | 2 |
| 179 | C110001-Z1 | Axle Stopper | 1 |
| 180 | J080005-YH | M5 × 5m/m _Slotted Set Screws | 2 |
| X | J99B0055-01 | Guest Assembly Screws | 1 |
| X | I090057 | SOLE Aluminum Label | 1 |
| X | I010049 | OVERLAY | 1 |
| X | I090182 | Sole E98 Type Aluminum Label | 1 |
| X | I050228 | Side Bobble Label | 2 |
| X | I050229 | Console Bobble Label | 1 |