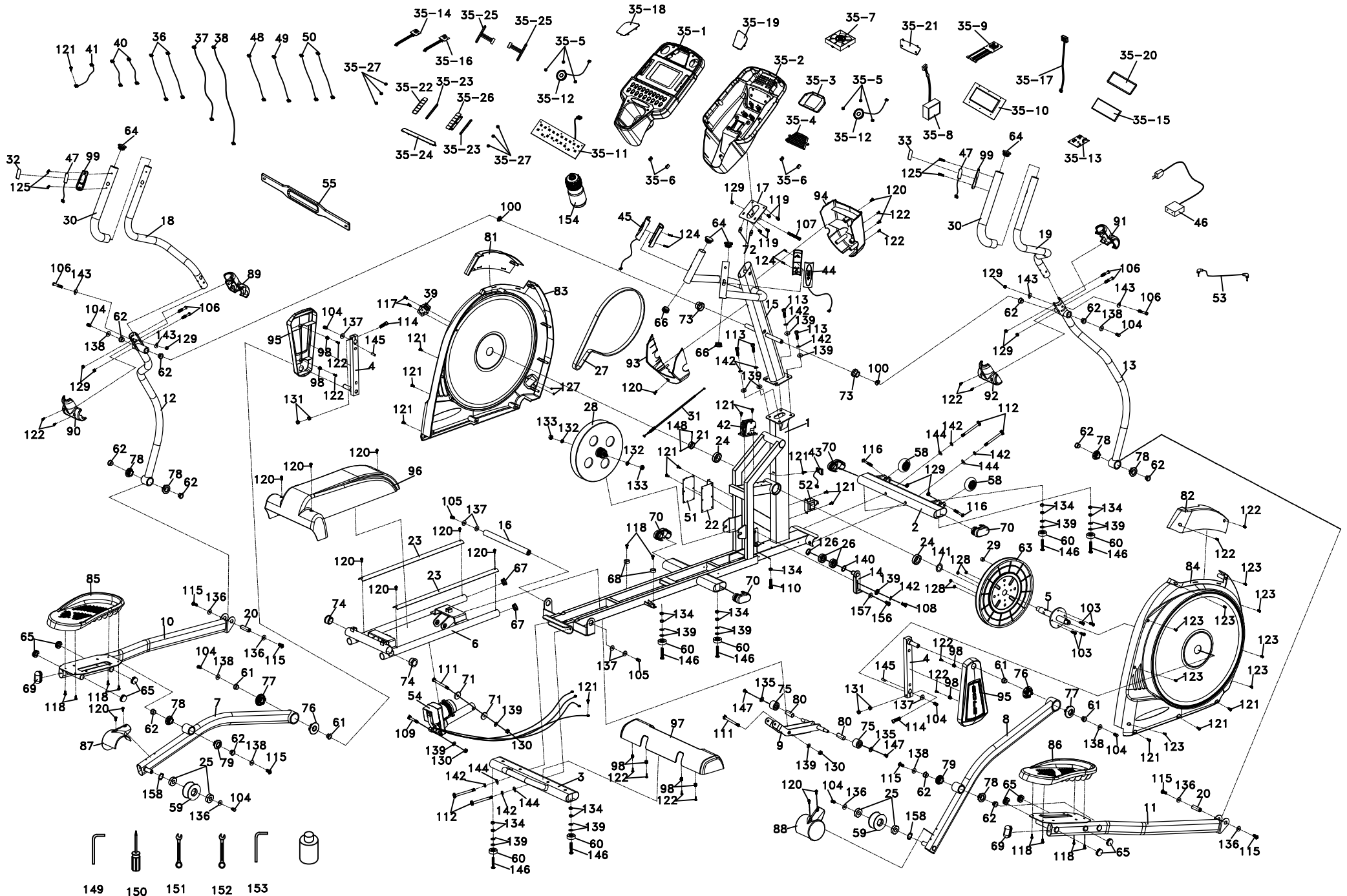


# SE578SB



20120828

# SOLE - E25-525012 - PARTS LIST

Dyaco#	Material #	Detailed Descriptions	QTY
1	BB010055-Q2	Main Frame	1
2	BB070092-Q2	Front Stabilizer Bar	1
3	BB070093-Q2	Inclinable Rail Assembly	1
4	BB040020-Q2	Crank Arm Assembly	2
5	C140026	Crank Axle	1
6	BB030036-Q2	Rear Rail Assembly	1
6	RBB030036-Q2	Rear Rail Assembly	1
7	BB050142-Q2	Pedal Arm (L)	1
7	RBB050142-Q2	Pedal Arm (L) Assembly	1
8	BB050143-Q2	Pedal Arm (R)	1
8	RBB050143-Q2	Pedal Arm ® Assembly	1
9	BB070091-Q2	Incline Device	1
10	BB050144-Q2	Connecting Arm (L)	1
10	RBB050144-Q2	Connecting Arm (L) Assembly	1
11	BB050145-Q2	Connecting Arm (R)	1
11	RBB050145-Q2	Connecting Arm (R)Assembly	1
12	BB060105-Q2	Lower Handle Bar (L)	1
12	RBB060105-Q2	Lower Handle Bar (L) Assembly	1
13	BB060106-Q2	Lower Handle Bar (R)	1
13	RBB060106-Q2	Lower Handle Bar (R)Assembly	1
14	BB070094-Q2	Idler Wheel Assembly	1
15	BB020074-Q2	Console Mast	1
15	RBB020074-Q2	Console Mast Assembly	1
16	BB070095	Locking Tube Assembly	1
17	BB080004-Q2	Console Holder Assembly	1
18	TT040454-Q2	Swing Arm (L)	1
18	RTT040454-Q2	Swing Arm (L) Assembly	1
19	TT040456-Q2	Swing Arm (R)	1
19	RTT040456-Q2	Swing Arm (R)Assembly	1
20	C050048-Z4	Rod End Shaft-(Ø17×Ø52.5×5/16")	2
21	C110001-Z3	Axle Stopper-(Ø32×10mm)	1
22	B060055-Q2	Controller Fixing Plate	1
23	M030005-Z0	Aluminum Rail-(2.0T×625mm)	2
24	K056005	6005_Bearing	2
25	K056003	6003_Bearing	4
26	K056203	6203_Bearing	2
27	N010002	Drive Belt-(8J500)	1
28	K500042	Flywheel-(Ø270×Ø40×10J)	1
29	N040002	Magnet-Ø15×7T	1
30	L120002-A1	Handgrip Foam-(Ø31.8×3T×420mm)	2
31	K020046	Steel Cable	1
32	I080497-A2	Handgrip Resistance Label (INCLINE)	1
33	I080497-A1	Handgrip Resistance Label (LEVEL)	1
35	RZ5YE001A-20	Console Assembly	1

35~1	P020350B-MA-AV	Console Top Cover	1
35~2	P020326A-A1	Console Bottom Cover	1
35~3	P250002-A1	Fan Grill Anchor	1
35~4	P250001-A1	Deflector Fan Grill	1
35~5	P060223-A1	Speaker Grill Anchor	6
35~6	P060060-A1	Fan Grill Anchor	4
35~7	F040004	Fan Assembly-(TFD-8025H12Z+400mm+XHP-4)	1
35~8	D020501	300m/m_W/Receiver, HR-(YJ-8200,300mm+XHP-3)	1
35~9	D022189	Interface Board-(YJ-51601-K5)	1
35~10	D022207	Console Display Board-(YE001(YJ-59500)	1
35~11	D022193	Main Key Board-(YJ-59510-K1)	1
35~12	F050150	250m/m_Speaker W/Cable	2
35~13	F110204	Amplifier Controller-(YJ-8509-1)	1
35~14	D020533	300m/m_Sound Board W/Cable (Red)	1
35~15	P020269	LCD Transparent Piece-(142.6×93.6×2T)	1
35~16	D020532	300m/m_Sound Board W/Cable (White)	1
35~17	E060503	250m/m_Amplifier Cable	1
35~18	B130091-Z3	Speaker Iron Net (L)	1
35~19	B130092-Z3	Speaker Iron Net (R)	1
35~20	P060443	6.5" Water-resist Rubber-(143×94×1.5T)	1
35~21	P060529-MA	LOGO Plate	1
35~22	P170069-AC-BO	Key Fast Board (L)	1
35~23	P170070-A1	Key Fast Board Foam	2
35~24	P240008-JH	Book Rack	1
35~25	F090405	Console Resistance Button W/Cable	2
35~26	P170069-AC-BP	Key Fast Board (R)	1
35~27	P060183-A1	Speaker Grill Anchor-(Ø12×5.5T)	6
36	E010064	400m/m_Connecting Wire, Controller	2
37	E020123	750m/m_Computer Cable	1
38	E020353	1350m/m_Computer Cable	1
39	F030053	AC Electronic Module	1
40	E010081	80m/m_Connecting Wire (White)	2
41	E040007	200m/m_Ground Wire	1
42	D020601	Gear Motor-(YJ-9900)	1
43	F030406	300m/m_Sensor W/Cable	1
44	F090235	850m/m_Handpulse W/Cable Assembly (White)	1
45	F090236	850m/m_Handpulse W/Cable Assembly (Red)	1
46	E060001	Power Cord	1
47	F090401	Resistance Button W/Cable	2
48	E050101	450m/m_Handle Wire (Upper), Resistance	1
49	E050102	450m/m_Handle Wire (Upper), Incline	1
50	E050104	900m/m_Handle Wire (Lower), Resistance/Incline	2
51	D020604	Incline Controller-(YJ-2001L)	1
52	D022035	Incline Adaptor-(08007EP,120v)	1
53	E090001	400m/m_Audio Cable	1
54	G110076	Incline Motor-(TM-N01-A33,JS15A,N30128L,115V,1/15HP,1450mm)	1
55	F090001-A3	Chest Strap-(TX-1) SOLE LOGO	1
58	P050021	Transportation Wheel-(PUØ65 )	2

59	P050055-PU	Slide Wheel , Urethane-(Ø78PU)	2
59	RP050055A-PU	Slide Wheel , Urethane-(Ø78PU) Assembly	1
60	P060256-A1	Rubber Foot-(Ø35×10/Ø10)	6
61	P060440	WFM-1719-12_Bushing	4
62	P060451	J4FM-1719-09_Bushing	12
63	P060090-A1	Drive Pulley-(-Ø330)	1
64	P060253-A1	Button Head Plug-Ø32(1.8T)	4
65	P040136-A1	Ø1" × 2.0T_Round Cap	8
66	P040052-A1	Ø32 × 1.8T_Round Cap	2
67	P040050-A1	32 × 2.5T_Round Cap	2
68	P060264	Rubber Foot Pad	2
69	<del>P040061-A1</del> P040139-A1	Ø30 × 60m/m_Oval End Cap	2
70	P060112-A1	Ø40 × Ø80_Oval End Cap	4
71	P060277	3/8" × 35 × 5T_Nylon Washer	2
72	P060278	5/16" × 25 × 3T_Nylon Washer	2
73	P060056-A1	Ø30 × 19m/m_Mast Bushing	2
74	P060029-A1	Ø38 × Ø34 × Ø26 × 4 + 16T_Bushing	2
75	P050038-A1	Incline Transportation Wheel-(Ø38×Ø12×30L)	2
76	P270042	Ø56 × Ø19 × 15L_Bushing (Flat)	2
77	P270043	Ø56 × Ø19 × 15L_Bushing (Curved)	2
78	P270044	Ø42 × Ø19 × 15L_Bushing (Flat)	6
79	P270045	Ø42 × Ø19 × 15L_Bushing (Curved)	2
80	P060490-A1	PVC Bushing-(Ø18.8×1T×40L)	2
81	P100139-A1	Console Mast Cover (L)	1
82	P100140-A1	Console Mast Cover (R)	1
83	P100137A-JH	Side Case (L)	1
83	RP100137AA-JH	Side Case (L)	1
84	P100138-JH	Side Case (R)	1
84	RP100138A-JH	Side Case (R)	1
85	P130015B-A1	Pedal (L)	1
86	P130016B-A1	Pedal (R)	1
87	P200007-A1	Slide Wheel Cover (L)	1
88	P200008-A1	Slide Wheel Cover (R)	1
89	P180104-A1	Front Handle Bar Cover (L)	1
90	P180105-A1	Rear Handle Bar Cover (L)	1
91	P180106-A1	Front Handle Bar Cover (R)	1
92	P180107-A1	Rear Handle Bar Cover (R)	1
93	P180087-A1	Console Chin Cover (Front)	1
94	P180110-A1	Console Chin Cover (Rear)	1
95	P180108A-MA	Crank Arm End Cap	2
96	P190040-A1	Incline Cover	1
97	P190041-A1	Rear Bar Cover	1
98	P060549	End Cap Stopper	8
99	P161002	Handle Switch Bracket	2
100	P040036-A1	Switch Wire Cap	2
103	J010002-ZZ	1/4" × 3/4" _Hex Head Bolt	4
104	J010503-YQ	5/16" × 15m/m_Hex Head Bolt	8

105	J010504-YN	5/16" × 25m/m_Hex Head Bolt	2
106	J010507A-Y3	5/16" × 1-3/4" _Hex Head Bolt	6
107	J010510A-Y3	5/16" × 2-1/2" _Hex Head Bolt	1
108	J011004-Y1	3/8" × 1" _Hex Head Bolt	1
109	J011006A-Y1	3/8" × 1-1/2" _Hex Head Bolt	1
110	J011006-Y1	3/8" × 1-1/2" _Hex Head Bolt	1
111	J011010A-Y1	3/8" × 2-1/2" _Hex Head Bolt	2
112	J011015-Y3	3/8" × 3-3/4" _Hex Head Bolt (Blackfast)	4
113	J031002-Z4	3/8" × 3/4" _Socket Head Cap Bolt	4
114	J033007-Z4	M8 × 35m/m _Socket Head Cap Bolt (Blackfast)	2
115	J020520-Y3	5/16" × 15m/m _Button Head Socket Bolt	6
116	J020507A-Y3	5/16" × 1-3/4" _Button Head Socket Bolt	2
117	J094502-Y3	M4 × 12m/m _Phillips Head Screw	2
118	J092001-YN	M5 × 10m/m _Phillips Head Screw	10
119	J092001-Y3	M5 × 10m/m _Phillips Head Screw	4
120	J092003-Y3	M5 × 15m/m _Phillips Head Screw	14
121	J367114-Y3	5 × 19m/m _Tapping Screw	15
122	J396804-Y3	Ø3.5 × 12m/m _Sheet Metal Screw	16
123	J396805-Y3	Ø3.5 × 16m/m _Sheet Metal Screw	8
124	J517007-Y3	Ø3 × 20m/m _Tapping Screw	4
125	J552004-Y3	M5 × 20m/m _Flat Head Socket Screw	4
126	J310002-Z4	Ø17 _C Ring (Blackfast)	1
127	J139411-Y3	M4 × 5T _Nyloc Nut	2
128	J139461-Z1	1/4" × 8T _Nyloc Nut	4
129	J139062-Y3	5/16" × 7T _Nyloc Nut	9
130	J139011-Y3	3/8" × 7T _Nyloc Nut	3
131	J129272-ZS	M8 × 6.3T _Nut (Blackfast)	4
132	J129031-Y3	3/8" -UNF26 × 4T _Nut	2
133	J160028-Z1	3/8" -UNF26 × 11T _Nut	2
134	J129021-Y3	3/8" × 7T _Nut	13
135	J210012-Y3	1/4" × 19m/m _Flat Washer	2
136	J210009-Y3	5/16" × 23 × 1.5T _Flat Washer	6
137	J210014-Y3	5/16" × 35 × 2.0T _Flat Washer	6
138	J210042-Y3	Ø8.5 × 26 × 2.0T _Flat Washer	6
139	J210003-Y3	3/8" × 19 × 1.5T _Flat Washer	20
140	J210011-Z1	Ø17 × 23.5 × 1T _Flat Washer	1
141	J210067-Z1	Ø38 × Ø26 × 1.5T _Flat Washer	1
142	J260003-Y3	3/8" × 2T _Split Washer	9
143	J220001-Y3	5/16" × 23 × 1.5T _Curved Washer	4
144	J220002-Y3	3/8" × 23 × 2T _Curved Washer	4
145	J320009-Z1	7 × 7 × 25m/m _Woodruff Key	2
146	J341008-Y3	3/8" × 2" _Flat Head Socket Bolt	6
147	J562501-YN	M6 × 10m/m _Thumb Head Socket Screw	2
148	J080005-YR	M5 × 5m/m _Slotted Set Screw (Blackfast)	2
149	J330009-Z1	Combination M5 Allen Wrench & Phillips Head Screw Driver	1
150	J330008	Phillips Head Screw Driver	1
151	J330025-Z1	13/14m/m _Wrench (160m/m)	1
152	J330026-Z1	12/14m/m _Wrench (160m/m)	1

153	J330023-Z1	Combination M8 Allen Wrench & Phillips Head Screw Driver	1
154	N030001-A5	Drink Bottle-(CSB-501,SOLE LOGO)	1
156	J020501-Y3	5/16" × 1/2" _Button Head Socket Bolt	1
157	J210018-Y3	5/16" × Ø18 × 1.5T _Flat Washer	1
158	J250002-Z4	Ø17 _Wave Washer	2
X	J99B0079-01	Hardware Kit (SOLE Logo E25)	1
X	I600043-A1	Carton	1
X	I050337	Side poly sticker	2
X	I050337A	Poly sticker on consloe (SOLE E25)	1
X	I030172	Consloe Overlay	1