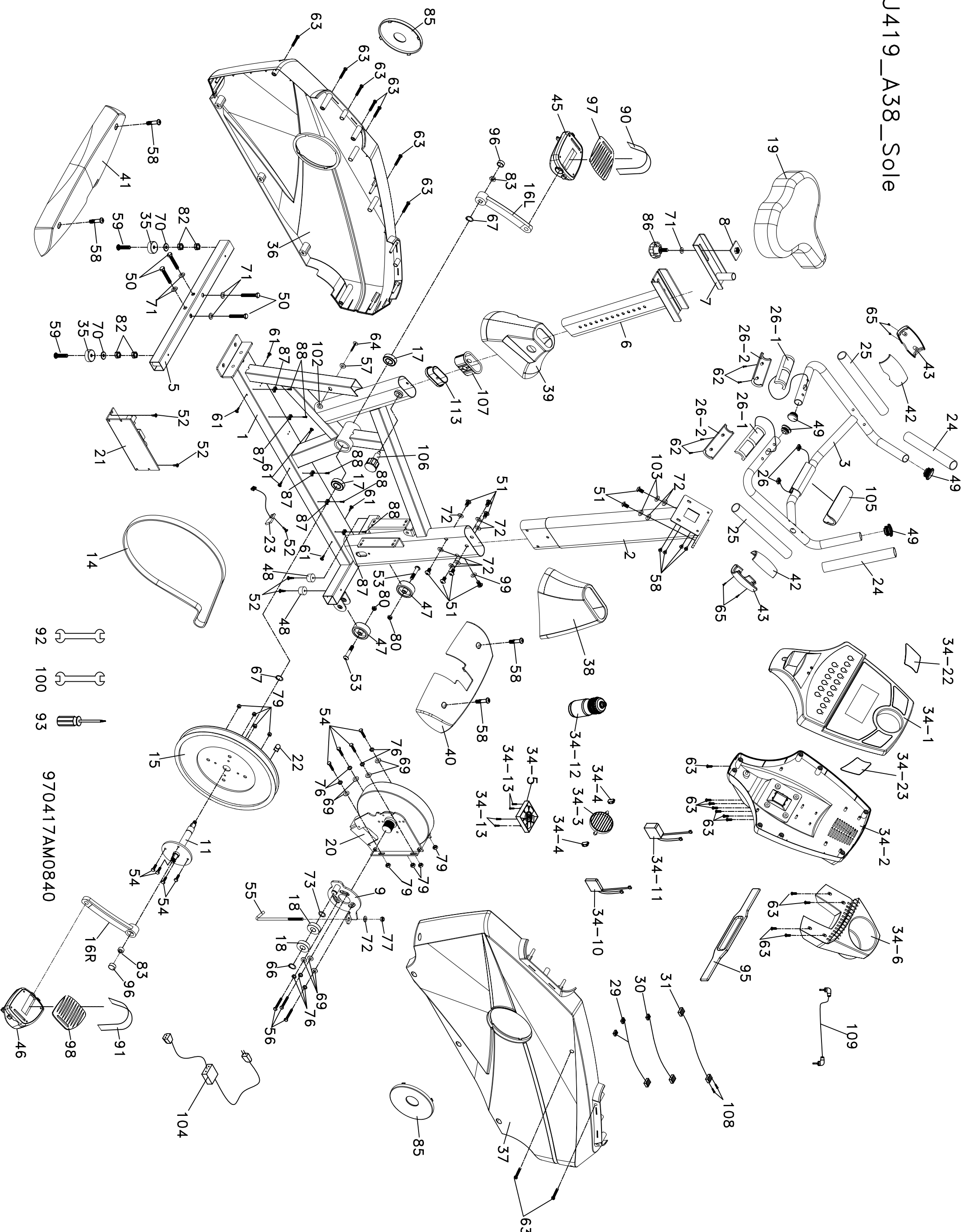


XU419\_A38\_Sole



**XU419-A38 (B84) Part List Sole**

Parts #	Description	Qty
1	Main Frame	1
2	Console Mast	1
3	Handle Bar, Seat	1
5	Rear Stabilizer	1
6	Inner Sliding Tube	1
7	Seat Sliding Bracket	1
8	Fix Plate	1
9	Idler Wheel Assembly	1
11	Crank Axle	1
14	Belt	1
15	Drive Pulley	1
16L	Crank (L)	1
16R	Crank (R)	1
17	Bearing, Crank Axle	2
18	Bearing for Idler Wheel	2
19	Seat Bottom Cushion	1
20	Induction Brake	1
21	Controller	1
22	Magnet	1
23	Sensor W/Cable	1
24	1"x250Lx5T Handgrip Foam	2
25	1"x200Lx5T Handgrip Foam	2
26	Handpulse W/Cable Assembly	2
26~1	Handpulse Assembly Top	2
26~2	Handpulse Assembly Bottom	2
29	1700mm Computer Cable	1
30	400mm Wire Brake Coil Harness	1
31	AC Wire Assembly	1
34	Console Assembly	1
34~1	Top Console Cover	1
34~2	Bottom Console Cover	1
34~3	Deflector Fan Grill	1
34~4	Fan Grill Anchor	2
34~5	Fan	1
34~6	Beverage Holder	1
34~10	Interface Daughter Board	1
34~11	Receiver, HR	1
34~12	Drink Bottle	1
34~13	φ3.5x30mm Self Tapping Screw	4
34~22	Speaker Iron Net (L)	1
34~23	Speaker Iron Net (R)	1
35	Leveling Foot	2
36	Chain Cover (L)	1
37	Chain Cover (R)	1
38	Console Mast Cover	1
39	Step Cover	1
40	Front Stabilizer Cover	1
41	Rear Stabilizer Cover	1
42	Handgrip Side Cap (Top)	2
43	Handgrip Side Cap (Bottom)	2
45	Pedal (L)	1
46	Pedal (R)	1
47	Transportation Wheel	2
48	φ25x15L Foot Pad	2
49	1" Button Head End Cap	4
50	3/8"x2-1/4" Hex Head Screw	4
51	5/16"x5/8" Hex Head Screw	9
52	5x19 Tapping Screw	5
53	5/16"x1-3/4" Button Head Socket Screw	2
54	1/4"x3/4" Hex Head Screw	8
55	M8x170m/m J Bolt	1
56	M6x15m/m Phillips Head Screw	3
57	φ5xφ15x1.5T Flat Washer	1
58	M5x12m/m Phillips Head Screw	8
59	3/8"x2" Thumb Head Socket Screw	2
61	5x16m/m Tapping Screw	6
62	φ3x20m/m Tapping Screw	4
63	φ3.5x12m/m Self Tapping Screw	20
64	φ3.5x19m/m Self Tapping Screw	1
65	φ3x10m/m Tapping Screw	4
66	φ17 C Clip	1
67	φ20 C Clip	2
69	1/4"x13x1T Flat Washer	7
70	3/8"x19x1.5T Flat Washer	2
71	3/8"x25x1.5T Flat Washer	5
72	5/16"x19x1.5T Flat Washer	9
73	φ17x23.5x1T Flat Washer	1
76	φ1/4" Split Washer	7
77	M8x7T Nyloc Nut	1
79	1/4" Nyloc Nut	8
80	5/16"x6T Nyloc Nut	2
82	3/8"x7T Nut	4
83	M10x1.0 Nut	2
85	Round Disk Cover, Crank	2
86	Fore Aft Adjustment Knob	1
87	Wire Tie Mount	5
88	3.5x16m/m Tapping Screw	5
90	Pedal Strap (L)	1
91	Pedal Strap (R)	1
92	13/15m/m Wrench	1
93	Phillips Head Screw Driver	1
95	Chest Strap	1
96	Crank Arm End Cap	2
97	Pedal Foam (L)	1
98	Pedal Foam (R)	1
99	5/16"x20 Curved Washer	1
100	12/14m/m Wrench	1
102	φ8x16x1T Flat Washer	1
103	φ8 Split Washer	2
104	AC Transformer	1
105	Handgrip Cap	1
106	Locking Knob	1
107	Center spatial wrap	1
108	M3x10m/m Phillips Head Screw	2
109	Audio Cable	1
113	Spacer, Slide	1